



## Forward-looking Statement

This presentation contains forward-looking statements concerning future operations of Centurion Minerals Ltd. (the “Company”). All forward-looking statements concerning the Company’s future plans and operations, including management’s assessment of the Company’s project expectations or beliefs may be subject to certain assumptions, risks and uncertainties beyond the Company’s control. Investors are cautioned that any such statements are not guarantees of future performance and that actual performance and exploration and financial results may differ materially from any estimates or projections. Such statements include, among others: possible variations in mineralization, grade or recovery rates; actual results of current exploration activities; actual results of reclamation activities; conclusions of future economic evaluations; changes in project parameters as plans continue to be refined; failure of equipment or processes to operate as anticipated; accidents and other risks of the mining industry; delays and other risks related to construction activities and operations; timing and receipt of regulatory approvals of operations; the ability of the Company and other relevant parties to satisfy regulatory requirements; the availability of financing for proposed transactions, programs and working capital requirements on reasonable terms; the ability of third party service providers to deliver services on reasonable terms and in a timely manner; market conditions and general business, economic, competitive, political and social conditions. It is important to note that the information provided in this presentation is preliminary in nature. There is no certainty that a potential mine will be realized.

Technical content has been reviewed and approved by Dr. Dennis LaPoint Ph.D., P.Geo., who is a Qualified Person as defined by National Instrument 43-101, Standards of Disclosure for Mineral Projects.

# Suriname

## Precious Metals Focus

Gold mineralization in Suriname is primarily controlled by structural and lithological factors within the Paleoproterozoic **Marowijne Greenstone Belt of the prolific gold producing Guiana Shield** (Source: [Journal of South American Earth Sciences](#)). The deposits are predominantly classified as **orogenic gold systems** formed during the Trans-Amazonian orogeny.

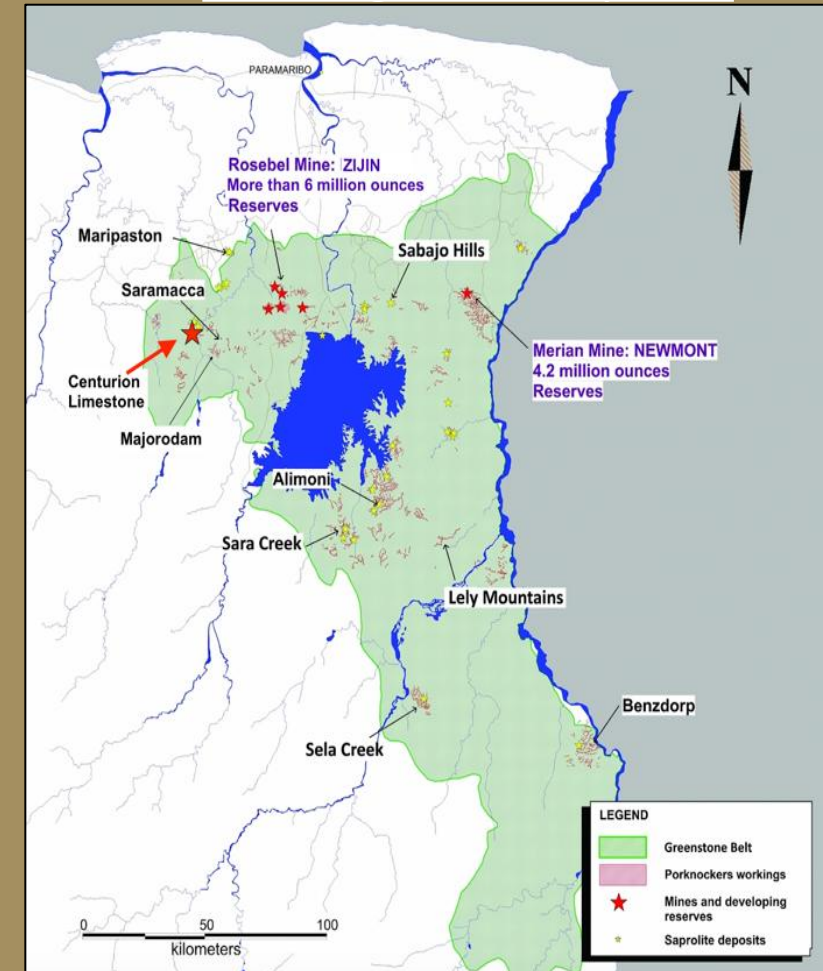


Located proximal to the Rosebel and Saramacca Mines of Zijin Mining Group Co., Ltd. ("**Zijin**").



Suriname Location,  
Source: [Google Maps](#)

## Gold deposits of Suriname Source: [Cambridge University Press](#)

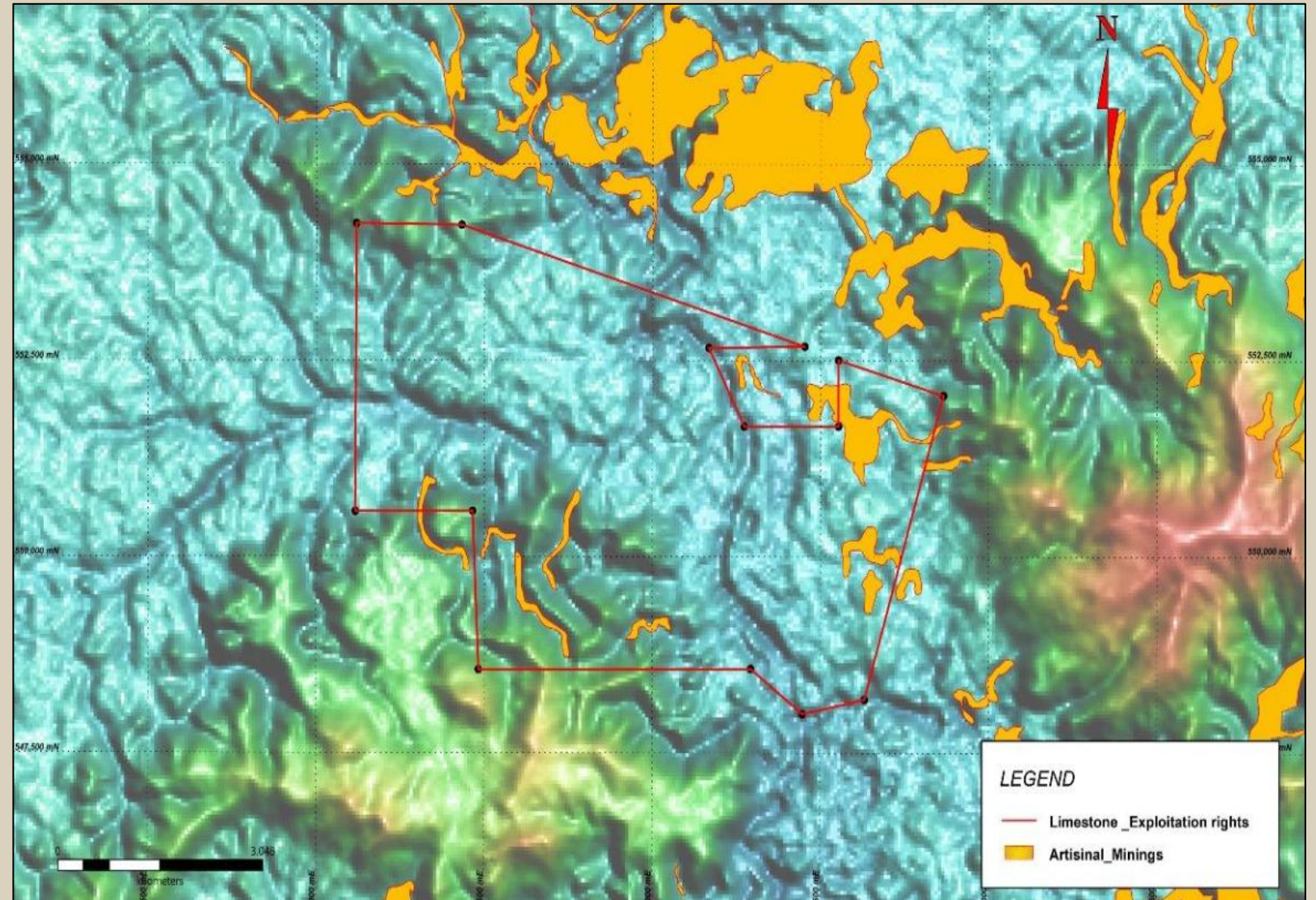


# Limestone Gold Property

The 3,548-hectare Project is well situated for a gold discovery. Historic and active small-scale mining indicates the presence of gold within the Limestone concession. Limestone is situated in the largest and most productive region of both active and historic gold mining in Suriname. This region includes the Rosebel Gold mines operated by Zijin. ([Zijin, Rosebel Mine](#)).

In addition, other international mining companies have been active in the region, exploring and drilling projects along the Saramacca and Rosebel Mine trends of Zijin. Limestone appears to be along the Saramacca mine trend.

## Prolific artisanal gold mining within the Limestone concession area



# Limestone Gold Property

## PROPERTY

The 3,548-hectare Project is well situated for a gold discovery. Historic and active small-scale mining indicates the presence of gold within the Limestone concession.

## PRODUCTIVE MINING REGION

Limestone is situated in the largest and most productive region of both active and historic gold mining in Suriname. This region includes the Rosebel Gold mines currently operated by Zijin (Source: [Zijin, Rosebel Mine](#))

## PROXIMAL TO OPERATING MINES

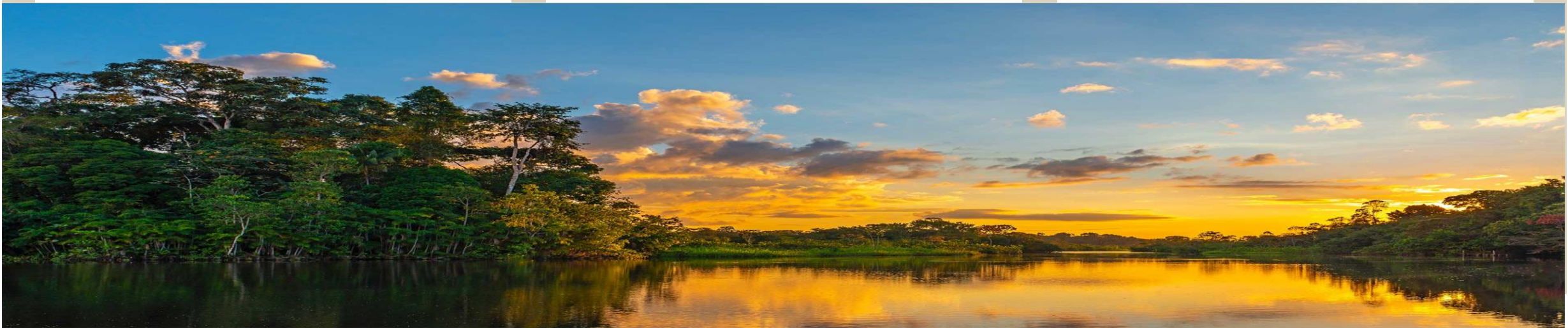
Suriname has two tier one mines, Rosebel owned by Zijin and Merian owned by Newmont Corp. (“**Newmont**”), both located within the greenstone belt. Historically, the greenstone belt has been underexplored. In recent years the area has experienced a surge in mineral exploration activity from companies including Founders Metals Inc., Miata Metals Corp., Greenheart Gold Inc., and Sranan Gold Corp. Suriname has the potential to develop multiple new mines from concessions having similar gold potential to Limestone.

## ACCESS

The Project is less than 4 hours by road (or boat) from Paramaribo, Suriname’s capital city, with the Saramacca River crossing the concession area.

## RECENT EXPLORATION NEARBY

Other international mining companies have been active in the region, exploring and drilling projects along the Saramacca and Rosebel Mine trends of Zijin. Limestone appears to be along the Saramacca mine trend.



# Limestone proximity to Zijin Rosebel and Saramacca Mines



Google Earth

Image © 2026 Maxar Technologies  
Image © 2026 Airbus  
Image Landsat / Copernicus  
Image © 2026 CNES / Airbus