



**CENTURION**  
MINERALS LTD

TSX-V: CTN

A Canadian-based company  
focused on Acquisition,  
Exploration and Development of  
gold projects in the Americas

**GOLD | FEBRUARY 2023**



## Forward-looking Statement

This presentation contains forward looking statements concerning future operations of Centurion Minerals Ltd. (the “Company”). All forward-looking statements concerning the Company’s future plans and operations, including management’s assessment of the Company’s project expectations or beliefs may be subject to certain assumptions, risks and uncertainties beyond the Company’s control. Investors are cautioned that any such statements are not guarantees of future performance and that actual performance and exploration and financial results may differ materially from any estimates or projections. Such statements include, among others: possible variations in mineralization, grade or recovery rates; actual results of current exploration activities; actual results of reclamation activities; conclusions of future economic evaluations; changes in project parameters as plans continue to be refined; failure of equipment or processes to operate as anticipated; accidents and other risks of the mining industry; delays and other risks related to construction activities and operations; timing and receipt of regulatory approvals of operations; the ability of the Company and other relevant parties to satisfy regulatory requirements; the availability of financing for proposed transactions, programs and working capital requirements on reasonable terms; the ability of third party service providers to deliver services on reasonable terms and in a timely manner; market conditions and general business, economic, competitive, political and social conditions. It is important to note that the information provided in this presentation is preliminary in nature. There is no certainty that a potential mine will be realized.

Technical content has been reviewed and approved by Mike Kilbourne, P.Geo, who is a Qualified Person as defined by National Instrument 43-101, Standards of Disclosure for Mineral Projects.





# Northwestern Ontario

## Precious Metals Focus

Northwestern Ontario is home to several world class mineral districts with major deposits and mines including gold and silver, as well as a diverse portfolio of metals such as nickel, copper, zinc, platinum and palladium, cobalt and iron.

Located in the central north Abitibi greenstone belt, the gold district of Harricana-Turgeon is recognized as a high-grade mining camp.

The Casa Berardi West Project strategically located in a historical and current mining district and has nearby infrastructure and road access.



## CLOSEOLOGY STRATEGY

**AMEX Exploration's Perron** gold discovery that includes a drill hole returning 15.52 g/t Au over 15 .85 metres; located 12 kms from the Project

**Normetal Mines'** historical production of 10 Mt @ 2.2% Cu, 5.4% Zn, 0.5g/t Au, and 44.5 g/t Ag located nearby

**Agnico Eagle's Detour Lake Mine**, located north of the Project, hosting a 15m ounce reserve, with a ~22 year mine life, and average gold production estimated at 659,000 ounces per year.

**Hecla Mining's Casa Berardi Mine** located 20 km NE with 3 million ounces ("Moz") Au in past production and 4 Moz Au in reserves and resources

**Aurileus Minerals** Mikwam Property with 1.81 Mt @ 2.34 g/t Au for 136,000 oz

# Casa Berardi West Location

Located 66 km. NE of Cochrane, Ontario

Situated along structural corridors hosting world class discoveries, operating mines, and significant past-producing operations

Main highway and ample logging roads permit year-round access to all areas of the claim group





# Casa Berardi West

## PROPERTY

The Casa Berardi West property comprises **3 claim groups** and covers approximately 4,700 hectares.

## HISTORIC DRILLING RESULTS

Includes more than 70 RC and diamond drill holes returning encouraging results that include 18 samples greater than 1,000 ppb (1 g/t) Au and the highest returning 38,000 ppb (38g/t) Au

## LOCATION

Strategically located northeast of Cochrane in the metal endowed central north Abitibi Subprovince.

The properties lie along structural corridors that host the Casa Berardi gold mine, the recent AMEX Exploration gold discovery, the Normetal Cu-Zn mine and south of the Agnico Eagle Detour Mine.

Numerous iron formations and shear zones proximal to a late granitic pluton has gold deposit analogies to the Musselwhite gold mine in Northern Ontario.

## ACCESS

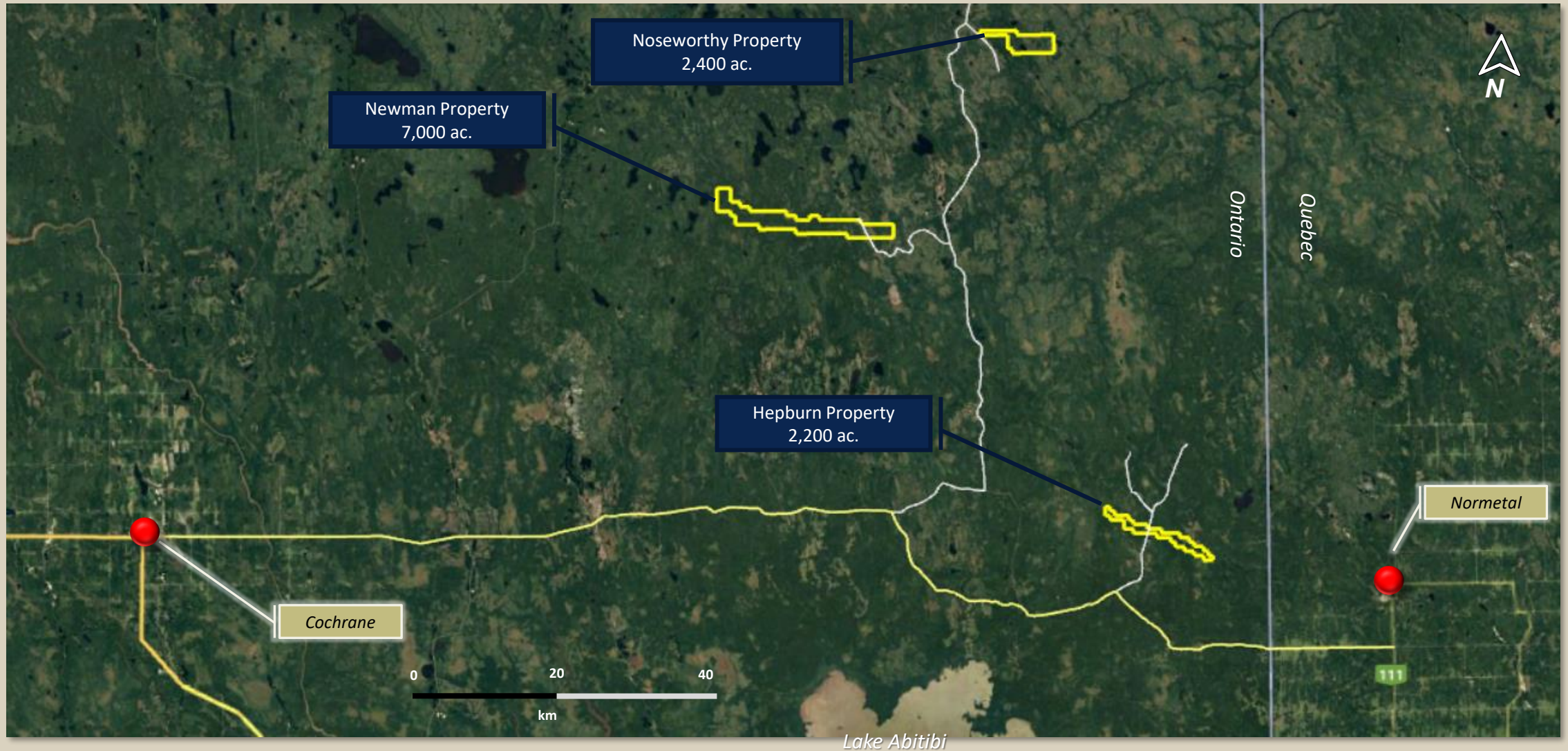
The property is **strategically located just east of Ontario Highway 652** and is serviced by active logging roads with nearby power and natural gas lines.

## RECENT EXPLORATION NEARBY

In close proximity to very recent new gold discoveries. Historic exploration and significant drill hole information on and near the Project claims.



# Casa Berardi West – 3 Claim Groups

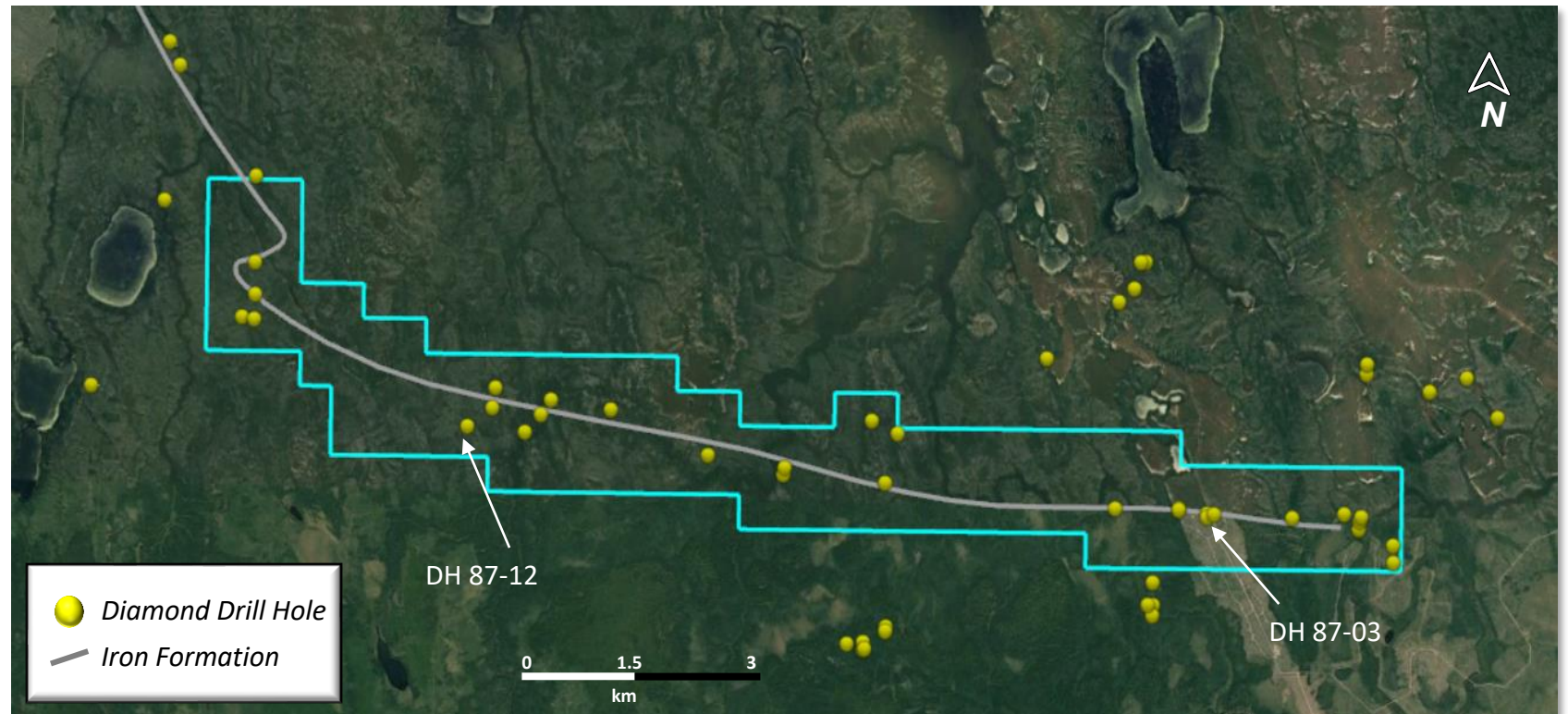


# Newman Claims – 2,841 Hectares

## Significant historic drill results

### RC DRILL PROGRAM

Diamond drilling by Chesbar Resources targeted the north conductor (“A”) of the RC gold results, instead of targeting the horizon that possibly contained the gold. In drill hole 87-03 a result of 1.65 g/t Au over 0.91 m was obtained in a 15m wide kaolinite-chlorite schist. This value was immediately at the bedrock surface and the first sample, but never followed up on. Hole 87-12 intersected sulphidized iron formation providing evidence that iron formations are present.





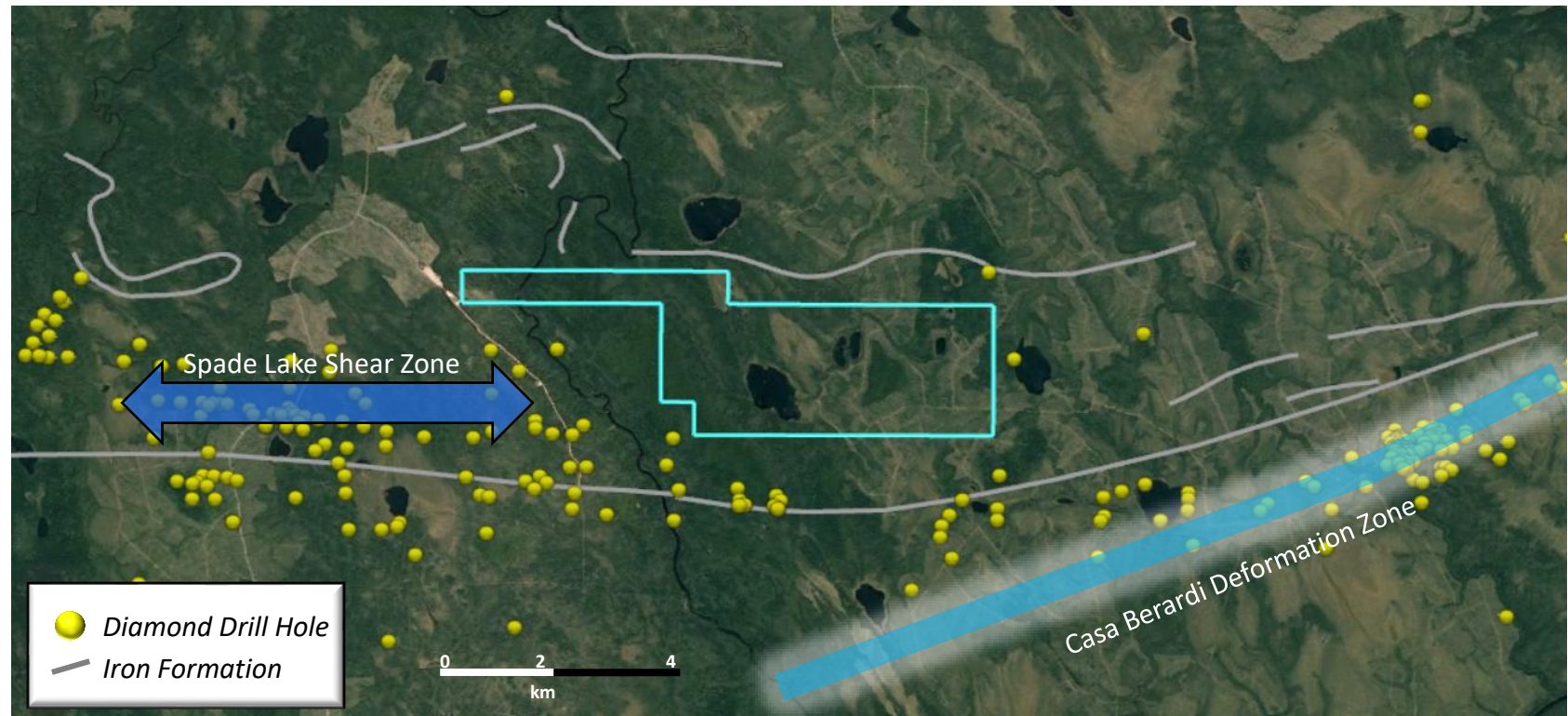
# Noseworthy Claims – 985 Hectares

## Significant historic drill results around Noseworthy Claims

### DIAMOND DRILL PROGRAM SURROUNDING CLAIMS

1990 diamond drilling by Cogema along the Spade Lake Shear Zone: 7.9 g/t Au over 4.5m, 2.75 g/t Au over 13.5m, 5.96 g/t Au over 1.5m and 0.41 g/t Au over 29.5m.

No drilling on the Noseworthy Property.





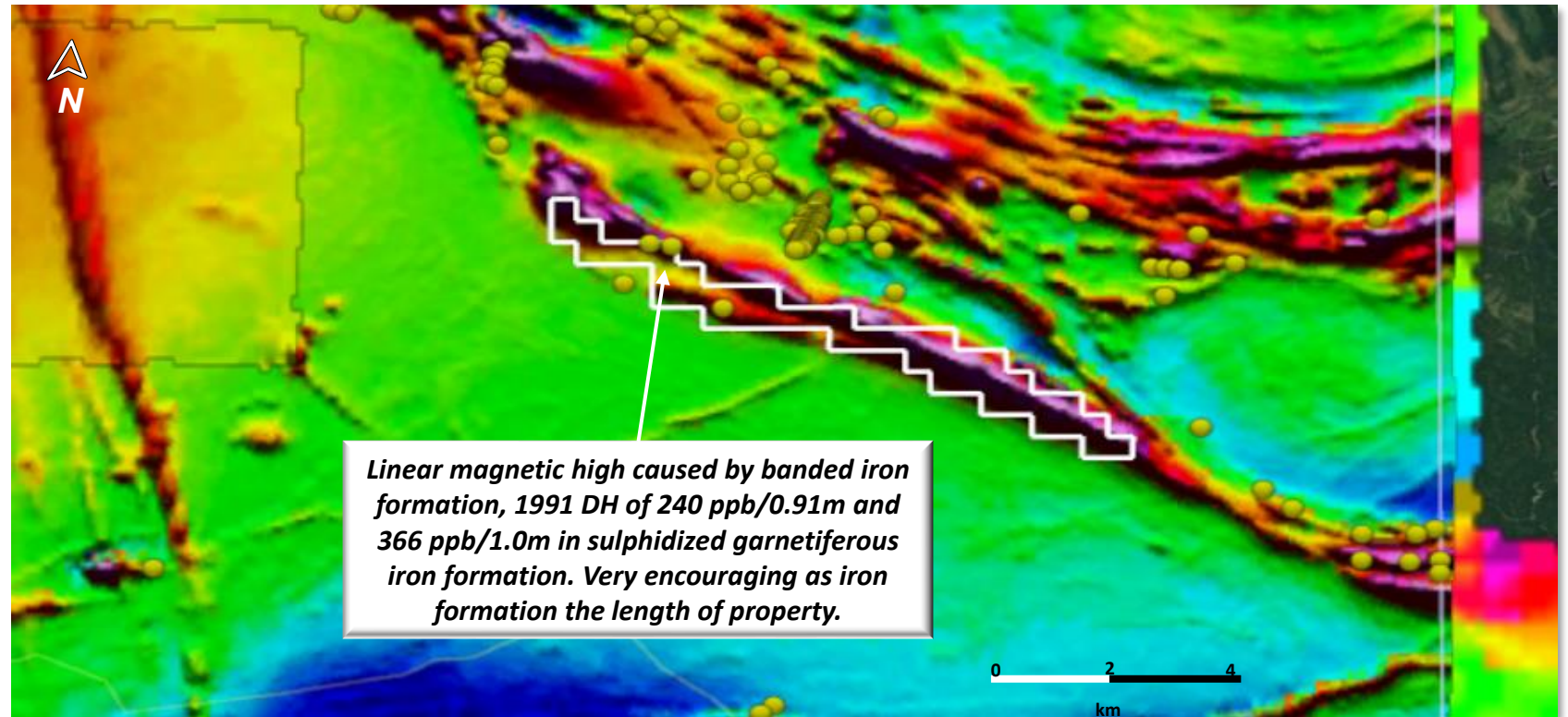
# Hepburn Claims – 889 Hectares

## Significant historic drill results

### DIAMOND DRILL PROGRAM

Claim group lies along an extension of structures believed to be related to the former Normetal VMS mine (15 kilometers SE) and more recently to the high-grade gold discoveries at the Perron property located 12 kilometers to the east.

Minimal diamond drilling in 1990 and 1991 included intersections of 366 ppb Au over 1 m and 240 ppb Au over 0.91m in iron formation. Multiple targets identified along the length of the claims.



# Recommended Exploration Strategy

## **HISTORIC COMPILATION**

Compilation of all public geological, geophysical and drilling information for each Property.

## **HEPBURN CLAIM GROUP**

High-resolution heliborne magnetic survey followed by structural interpretation integrating geology and mineralization.

## **NEWMAN CLAIM GROUP**

Structural and geological interpretation from the Geotech heliborne magnetic and VTEM survey (2012) incorporating drilling, mineralization and geology.

## **DRILL TARGETING**

Ground-truthing, sampling and mapping those areas of high merit.  
Ground geophysics (IP) over most promising targets to generate drill targets.

## **NOSEWORTHY CLAIM GROUP**

High resolution heliborne magnetic survey followed by structural and geological interpretation.

## **DRILLING**

Initial diamond drill program covering identified drill targets.



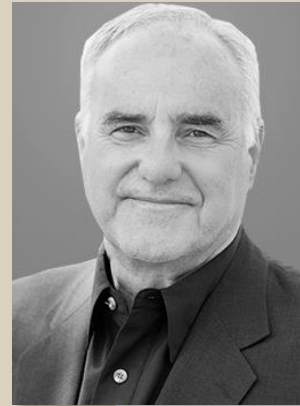


# Leadership Team



**David Tafel | Director, President & CEO**

Mr. Tafel holds a B.A. in Economics from the University of Western Ontario and contributes over 30 years of corporate structuring, strategic planning, financing and management experience to the Company. He has been an officer and director of a number of private and publicly listed resource companies. He has been instrumental in raising several hundred million dollars for resource, life sciences and technology companies. Mr. Tafel previously managed private investment funds at the largest independent Canadian securities firm.



**Ken Cawkell | Director**

Co-founder and Managing Partner of the law firm Cawkell Brodie LLP. Mr. Cawkell is a member of the British Columbia Bar Associations and has over 25 years' experience in both public and private venture capital markets. He has served as director and officer of a number of public companies involved in the mining industry.



**Jeremy Wright, CPA, CMA | Director, CFO**

Mr. Wright brings over 20 years' experience to the Company as President and CEO of Seatrend Strategy Group. Mr. Wright currently serves as the CFO for: Portofino Resources, Centurion Minerals, Westmount Minerals and Infinitum Energy; previously for Alpha Cognition, and Avant Brands (formerly GTEC Cannabis). He is a Director of Westmount Minerals, Centurion Minerals, and Infinitum Energy; previously for Pontus Protein, TGS Esports, Gold Mountain Mining (formerly Freeform Capital), Pacific Community Resources Society, and the Canadian Freestyle Ski Association. He is a CPA (CMA), has extensive negotiation training, and also holds a Bachelor of Arts, with honours in Environmental Economics from Brock University.



**Stephen Wilkinson | Director**

Mr. Wilkinson was the Vancouver-based mining analyst for RBC Dominion Securities Inc. in the mid to late 1990's. From 1999 to 2002, he was President, CEO and a director of Northern Orion Explorations Ltd. He has founded and funded a number of private and public exploration companies, and until recently was the CEO and founder of Blue Star Gold Corp. Mr. Wilkinson has a Bachelor of Science from the University of Western Ontario (Geology, 1976), a Master of Science from Carleton University in Ottawa (Geology, 1983) and an MBA degree from Clarkson University in New York (1995).

# Leadership Team



**Mike Kilbourne, BSc., P.Geo | Geo Consultant**

Mr. Kilbourne graduated from the University of Western Ontario in 1985 with an honours BSc. in Geology. His 1<sup>st</sup> field season was in 1980, representing 40+ years in the industry. Mr. Kilbourne's career has involved holding various executive positions for junior resource companies, gold production geologist for open pit, underground bulk and narrow vein mining, and long term mine planning for the 10+ simultaneous US aggregate operations. He has supervised and managed 100,000+ meters of diamond drilling in Archean precious and base metal projects. He recently surpassed generating 700+ exploration targets across North America and Mexico for a private firm.



**Bruce MacLachlan, P.Geo | Geo Consultant**

Mr. MacLachlan brings 35+ years' experience within the exploration industry. Mr. MacLachlan has proven exploration management skills, with the discovery of numerous occurrences including the Eagle River Deposit located near Wawa Ontario (Wesdome) and the Sugar Zone Mine north of White River (Harte Gold). Bruce has held the position of Geological Technician / Prospector with Noranda, Hemlo Gold and Battle Mountain Gold, Project Manager with CanAlaska Uranium and Exploration Manager with Noront Resources and Rare Earth Metals. In 2017-2018 field seasons, Mr. MacLachlan co-discovered a number of gold showings in the Hemlo area for Canadian Orebodies Inc.



**Coleman Robertson, BSc. | Geoscientist in Training**

Mr. Robertson is a Geoscientist in Training who graduated from McGill University's Geology program in 2014. He started working with Mr. MacLachlan in May of 2017, and co-discovered a number of gold showings in the Hemlo area for Canadian Orebodies Inc. in the 2017 and 2018 field seasons.



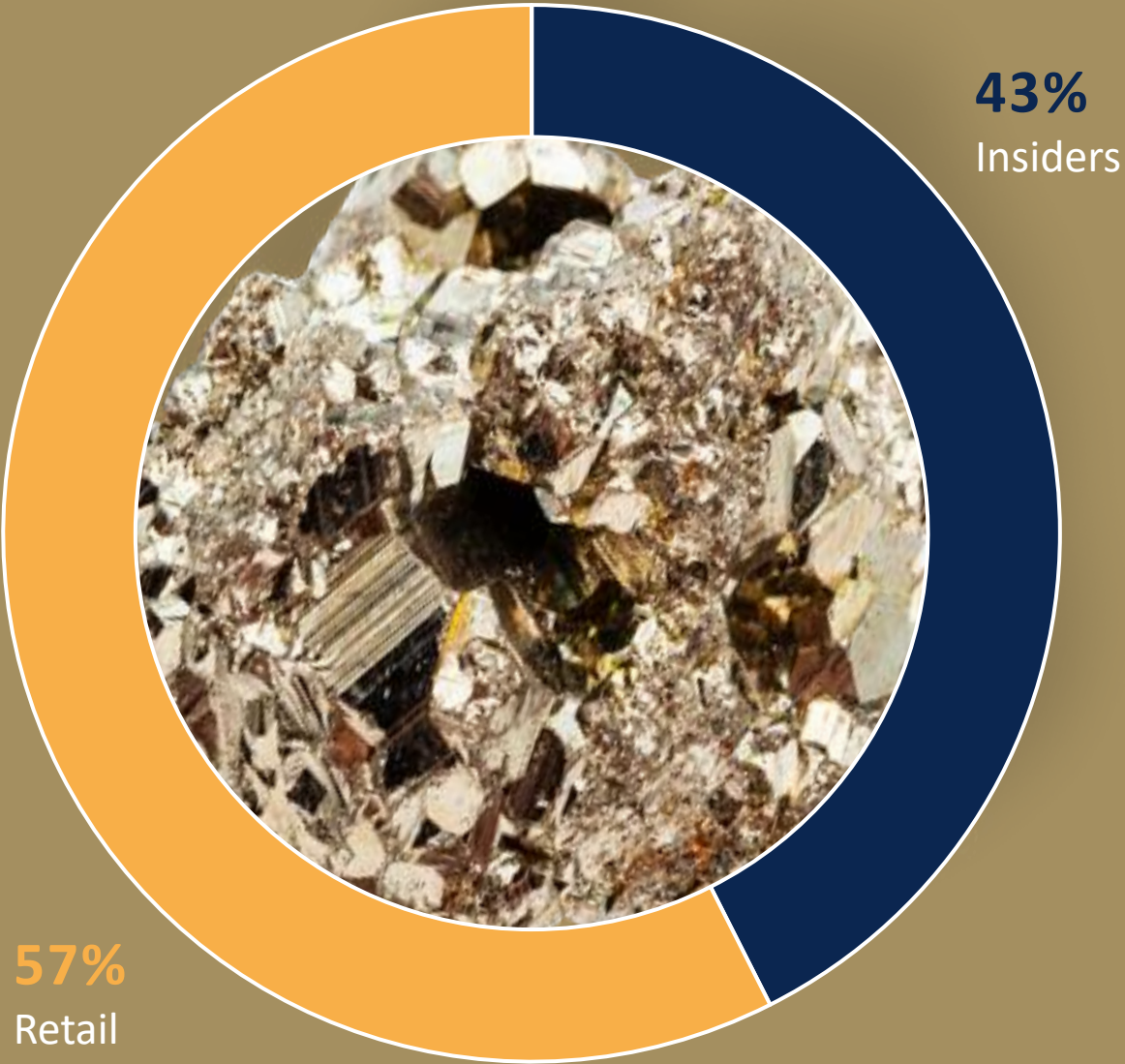
# Corporate Snapshot

## Ownership

### Capitalization Structure as of February 10, 2023

TRADING SYMBOL	CTN
LAST PRICE	0.025
SHARES OUT	31,469,069
OPTIONS	0
WARRANTS	0
FULLY-DILUTED	31,469,069

MARKET CAPITALIZATION	\$787,000
-----------------------	-----------





**CENTURION**  
MINERALS LTD

TSX-V: CTN

David Tafel  
CEO, Director

604 484 2161  
[info@centurionminerals.com](mailto:info@centurionminerals.com)

Jeremy Wright, CPA, CMA  
CFO, Director

604 837 7990  
[jwright@seatrendstrategy.com](mailto:jwright@seatrendstrategy.com)

