



# *Casa Beradi West Property Overview*

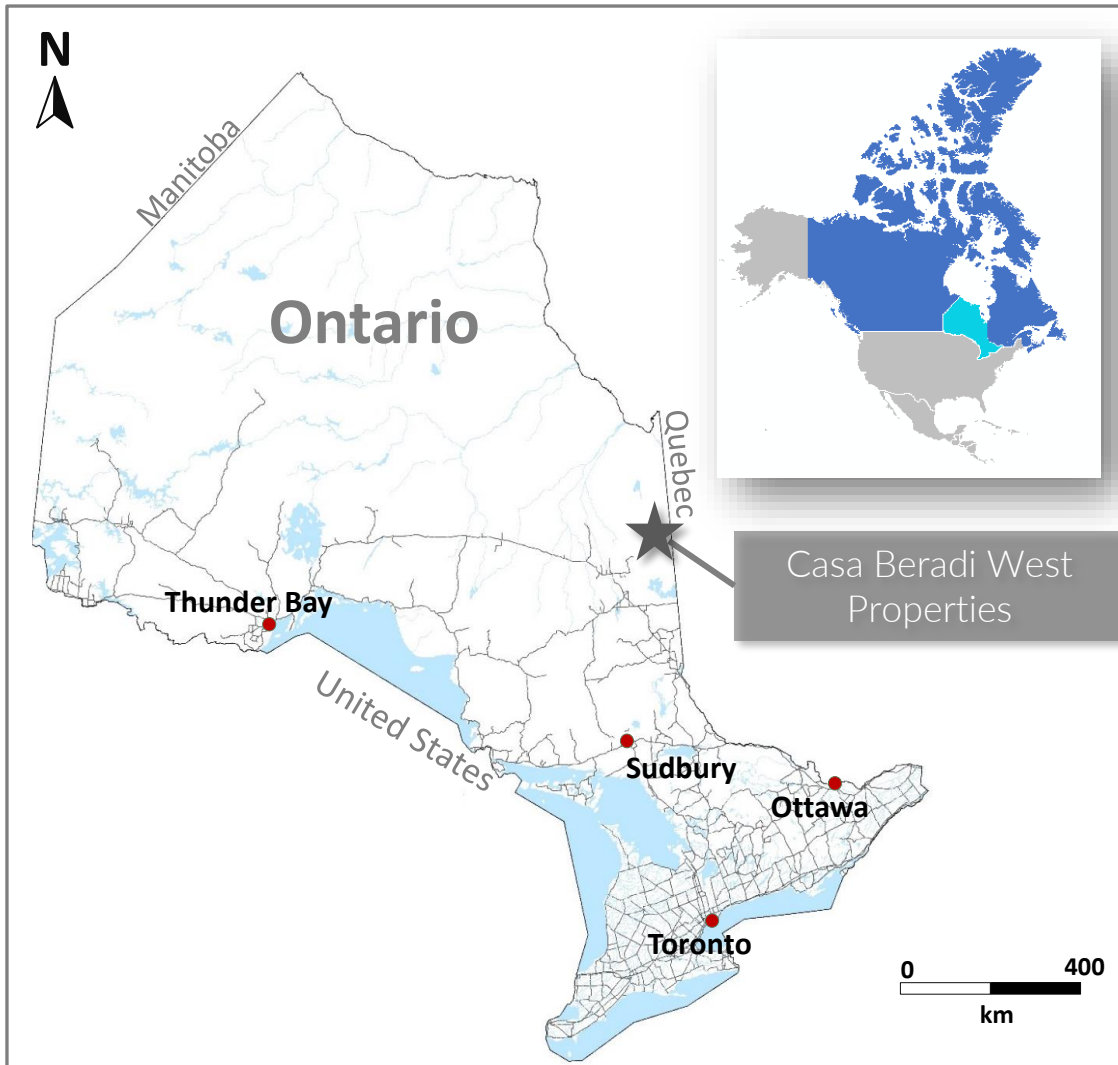
*Cochrane, Ontario*

# *Property Summary*

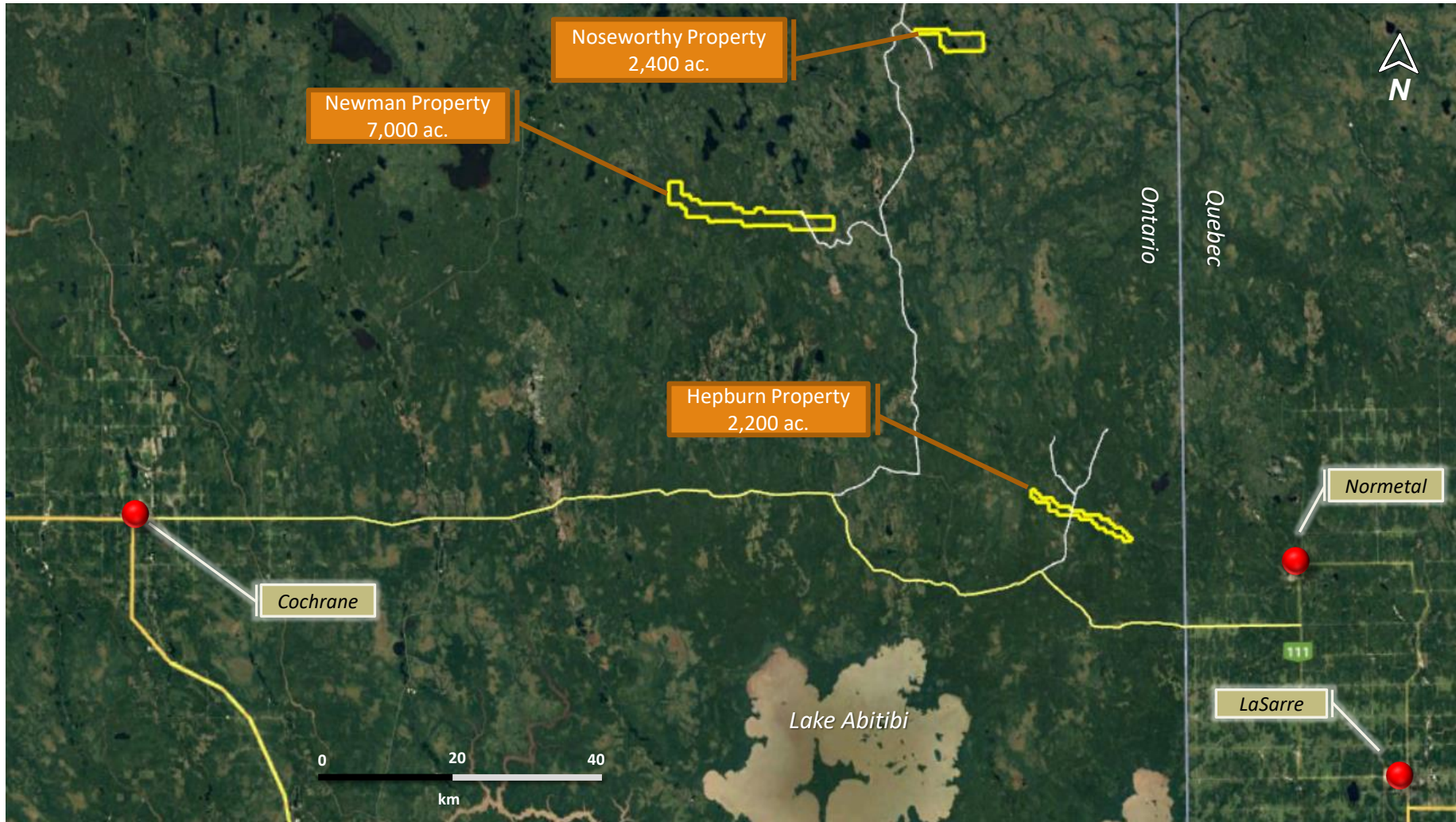
---

- The Casa Berardi West Properties consist of 3 claims groups comprising a total of 11,600 acres or 4,700 hectares.
- Strategically located northeast of Cochrane in the metal endowed central north Abitibi Subprovince.
- The properties lie along structural corridors that host the Casa Berardi gold mine, the recent AMEX Exploration gold discovery, the Normetal Cu-Zn mine and south of the Agnico Eagle Detour Mine.
- Numerous iron formations and shear zones proximal to a late granitic pluton has gold deposit analogies to the Musselwhite gold mine in northern Ontario.
- Multiple initial encouraging drill results.
- Excellent location, access and close to infrastructure.

# Regional Location



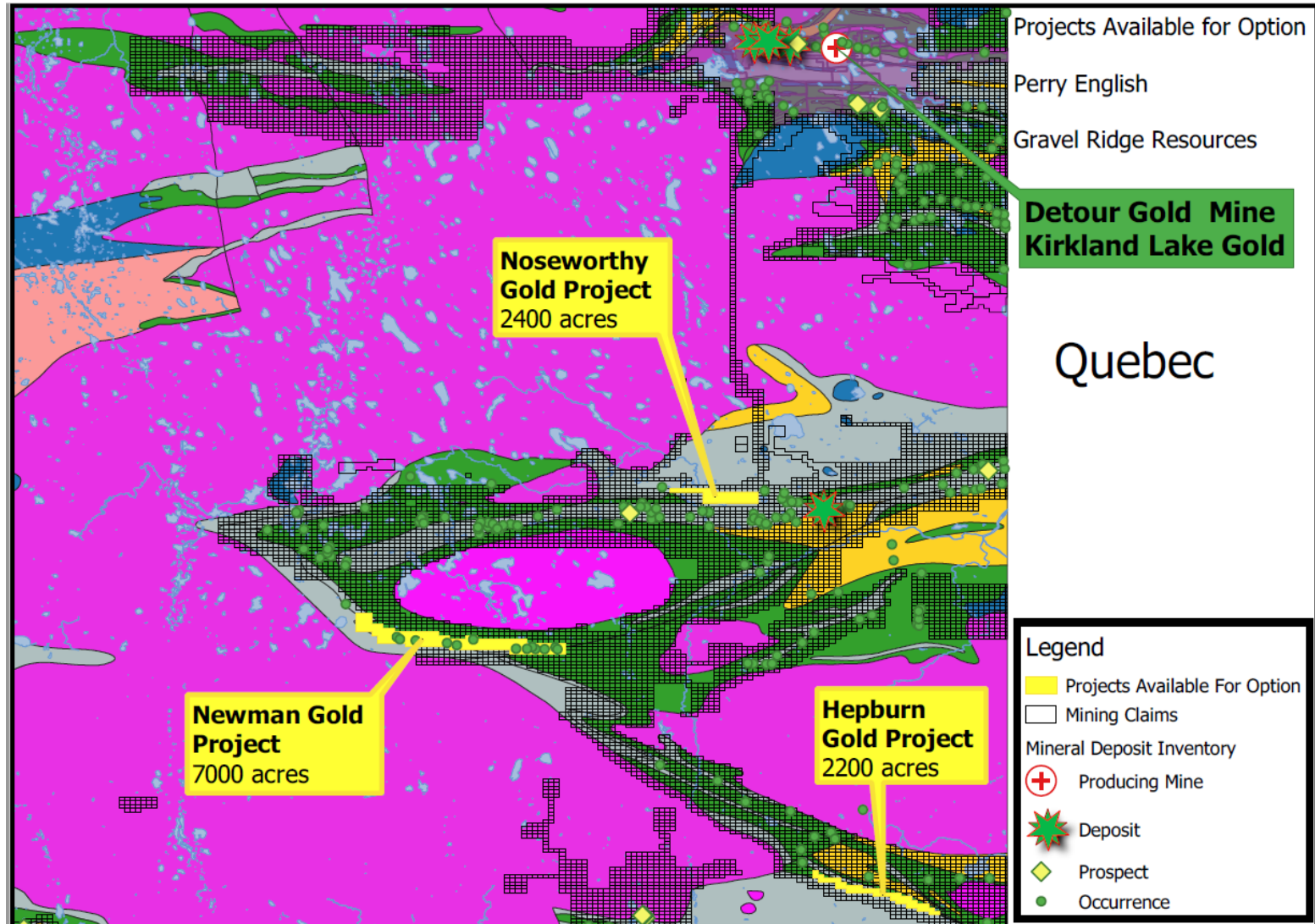
# Local Location and Access



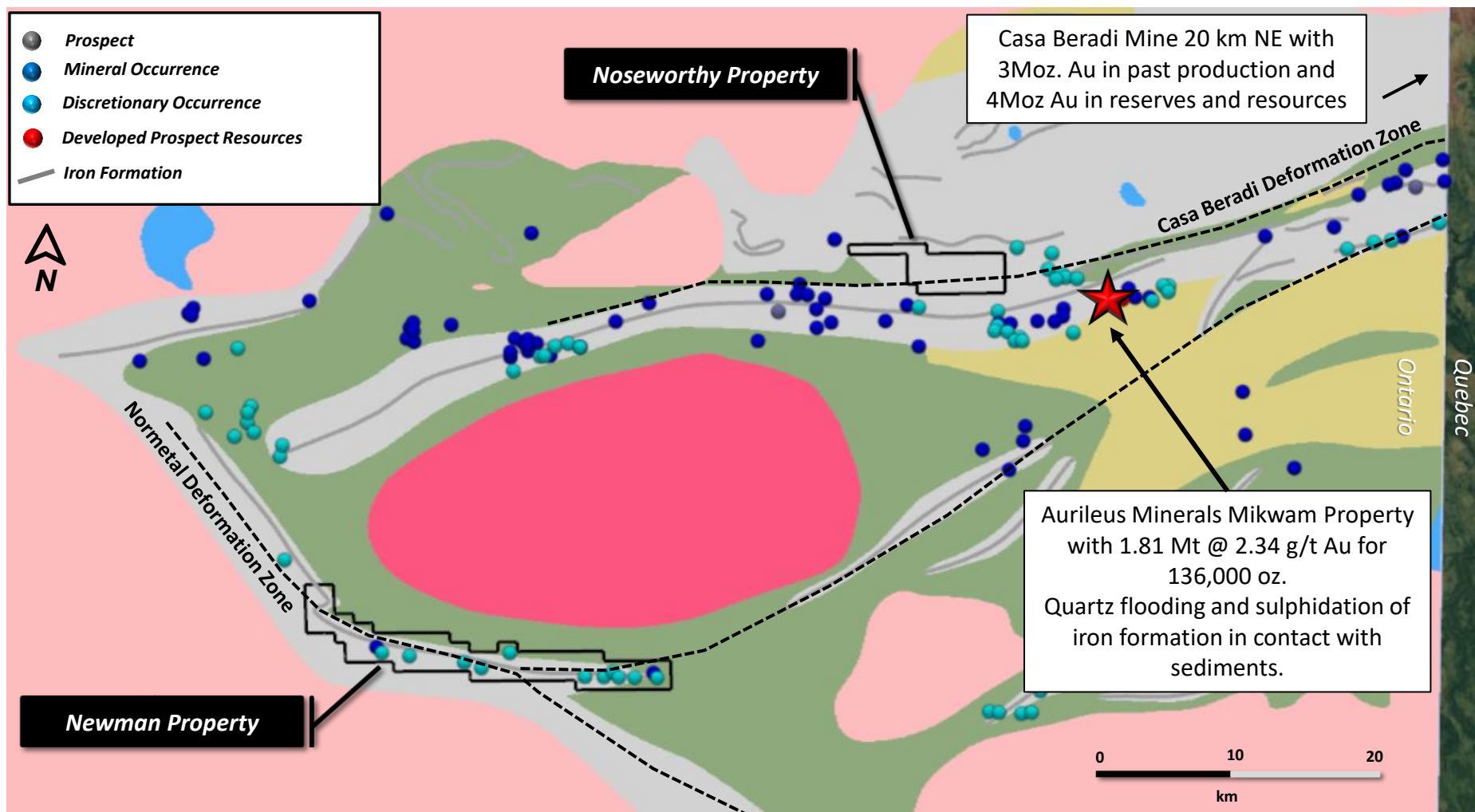
- Excellent location, access through a network of logging roads and nearby infrastructure



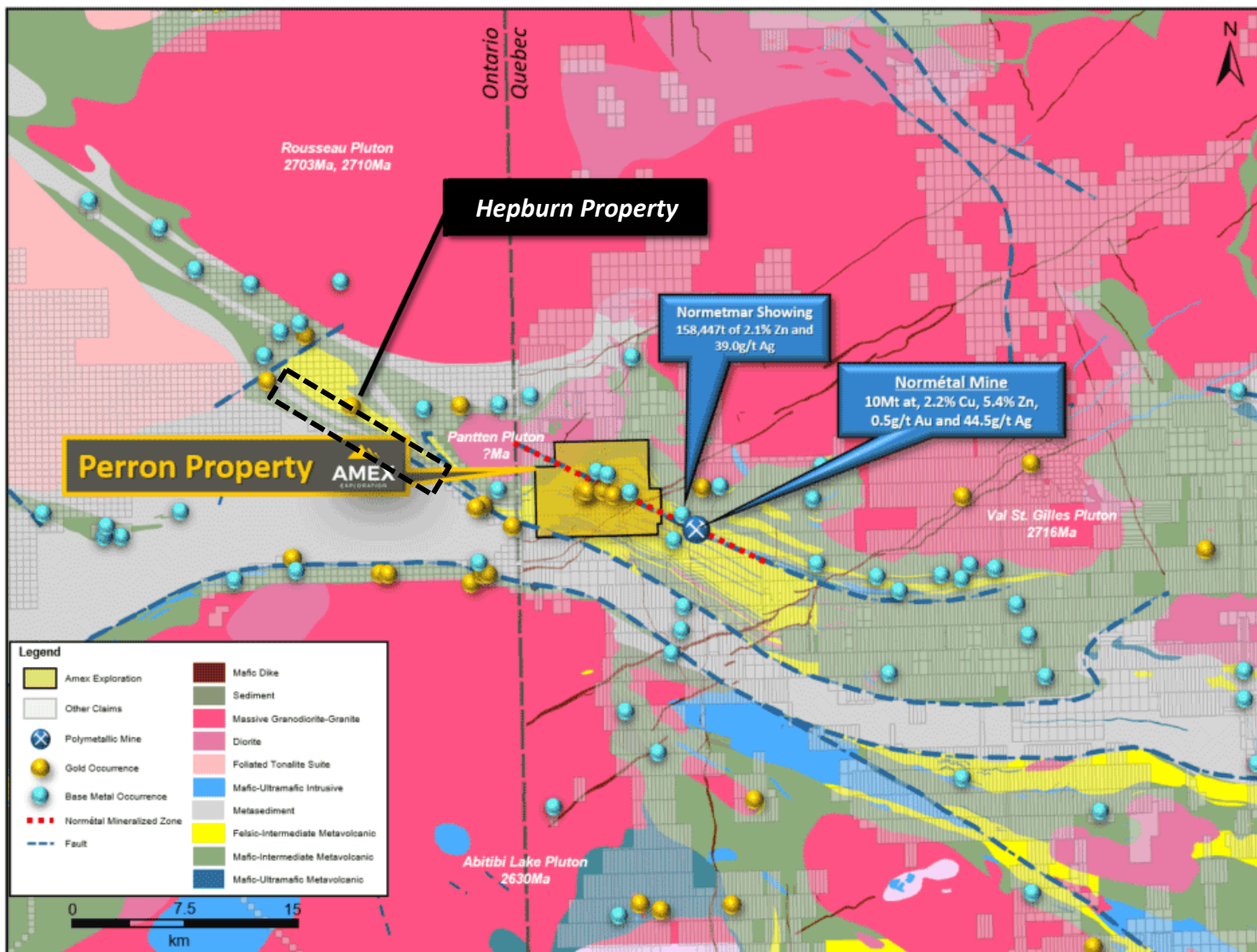
# Central North Abitibi Subprovince Geology



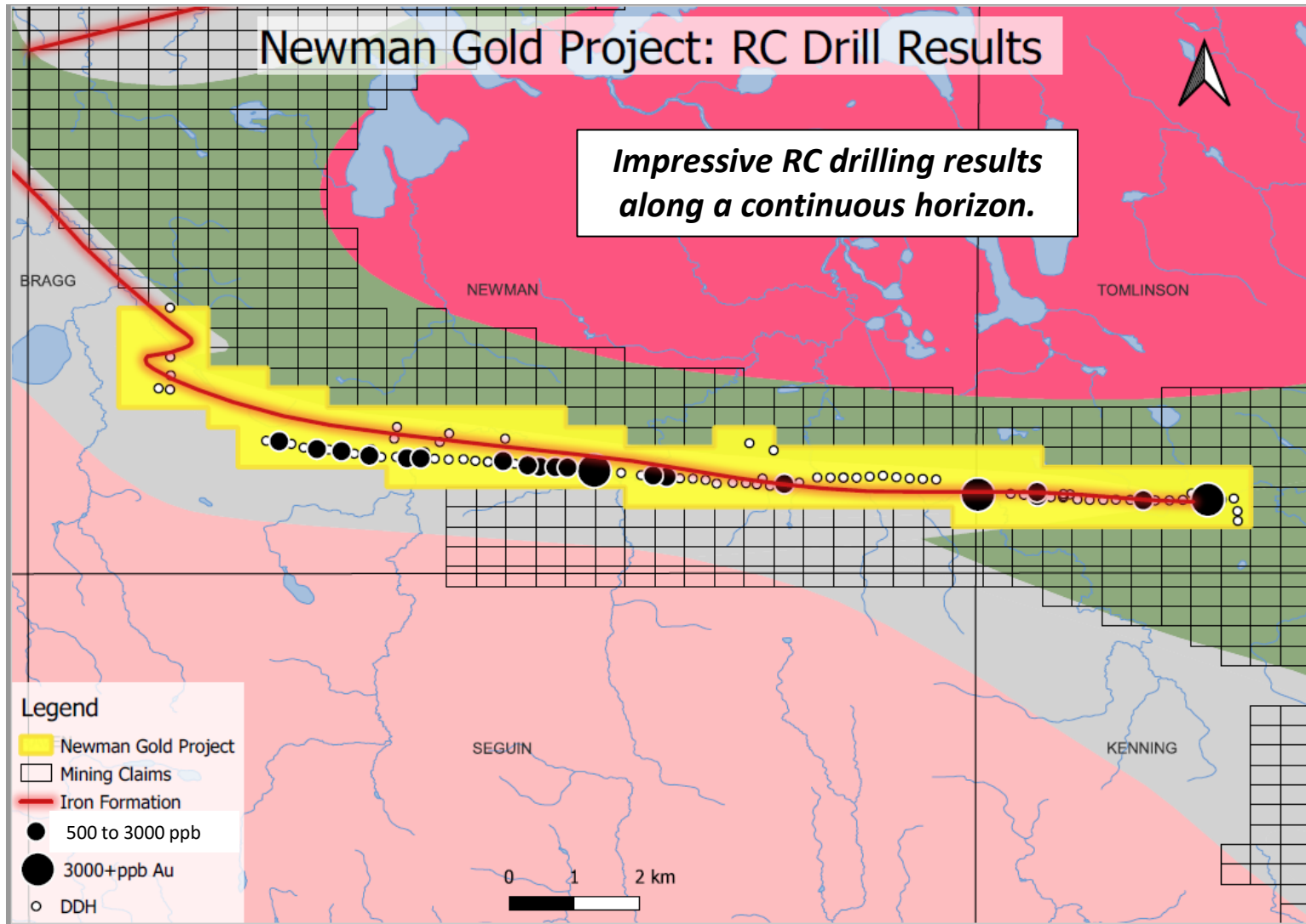
# Regional Geology, Newman and Noseworthy Properties



# Hepburn Property Location...within 5 km of the Perron Property



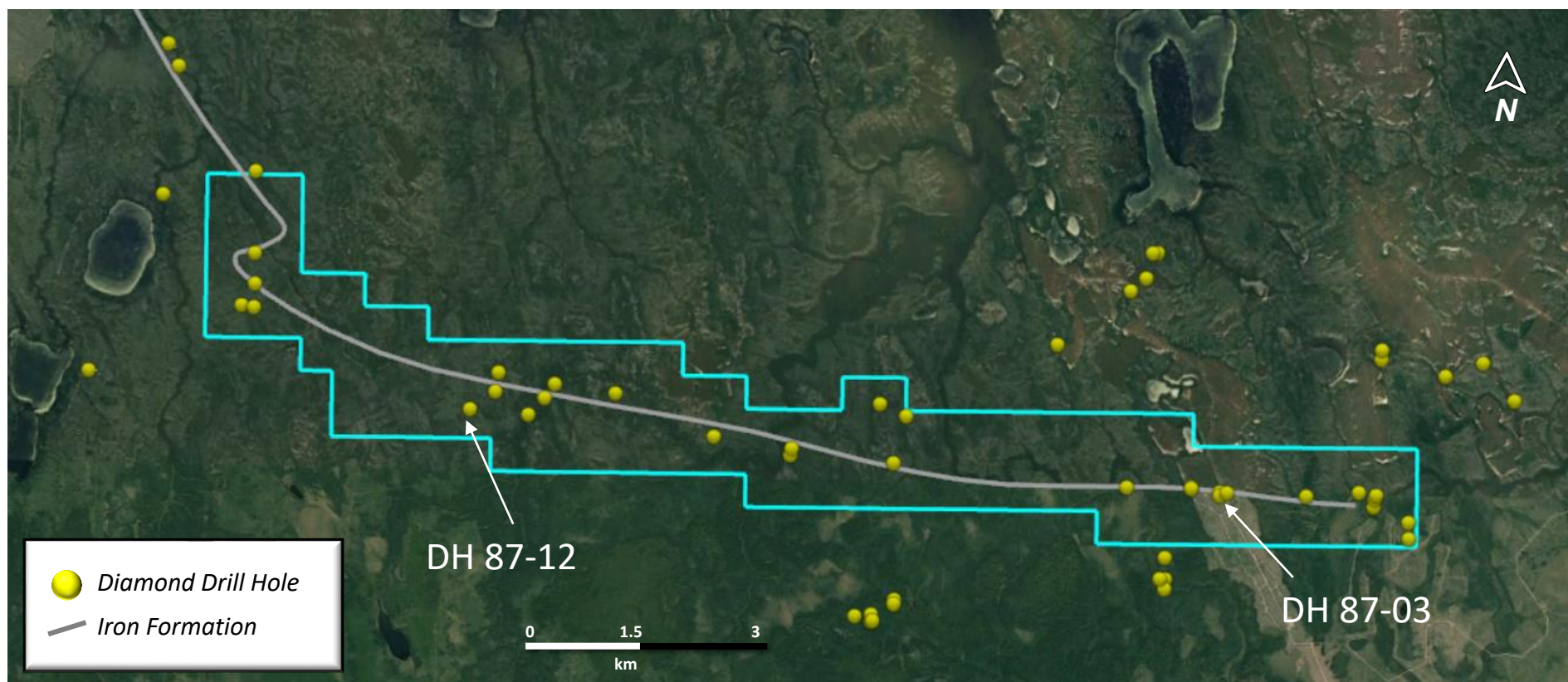
# RC Drilling, 1987 Chesbar Resources, Newman Property





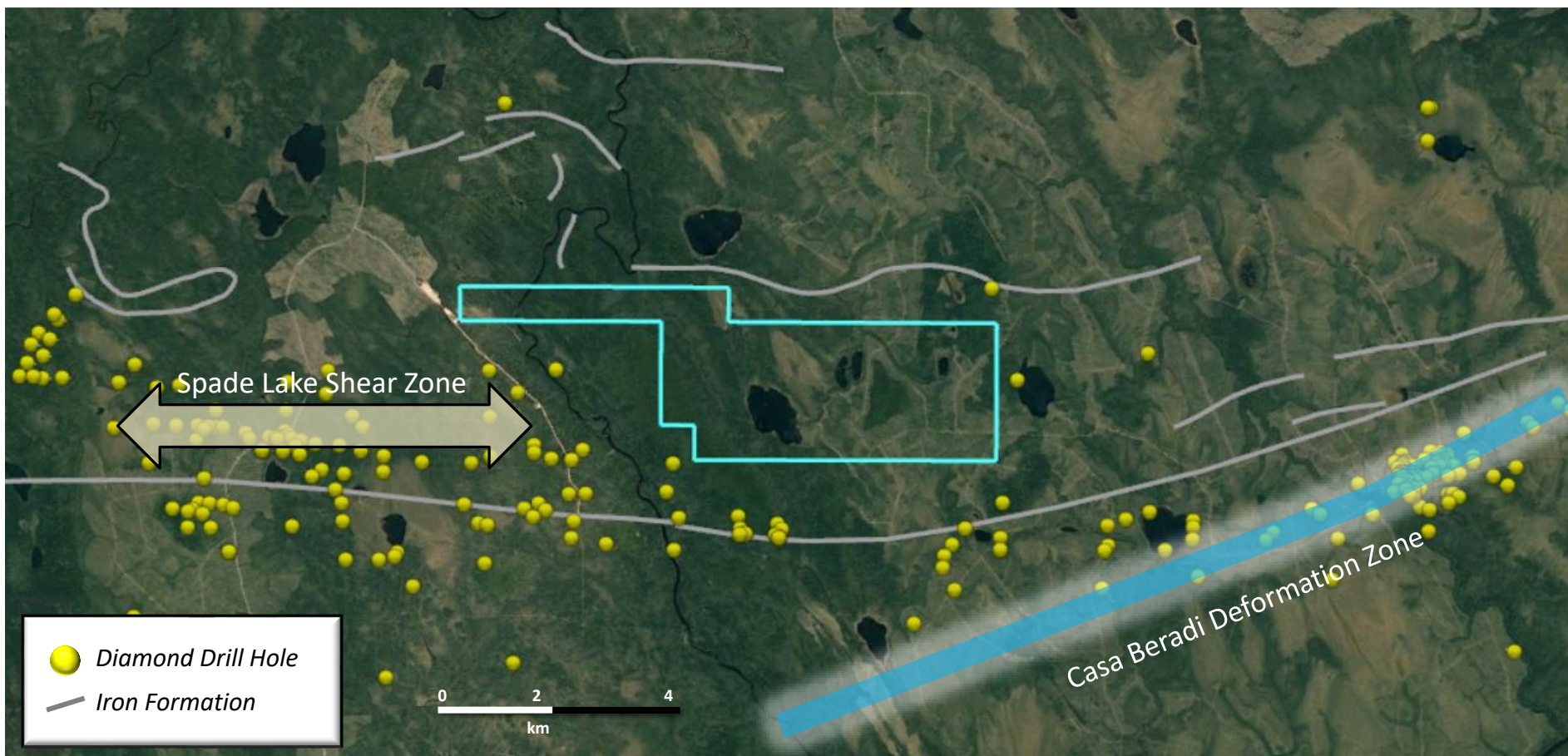
## *Diamond Drilling, 1987 Chesbar Resources, Newman Property*

Diamond drilling by Chesbar Resources targeted the north conductor (“A”) of the RC gold results, instead of targeting the horizon that possibly contained the gold. In drill hole 87-03 a result of 1.65 g/t Au over 0.91 m was obtained in a 15m wide kaolinite-chlorite schist. This value was immediately at the bedrock surface and the first sample, but never followed up on. Hole 87-12 intersected sulphidized iron formation providing evidence that iron formations are present.



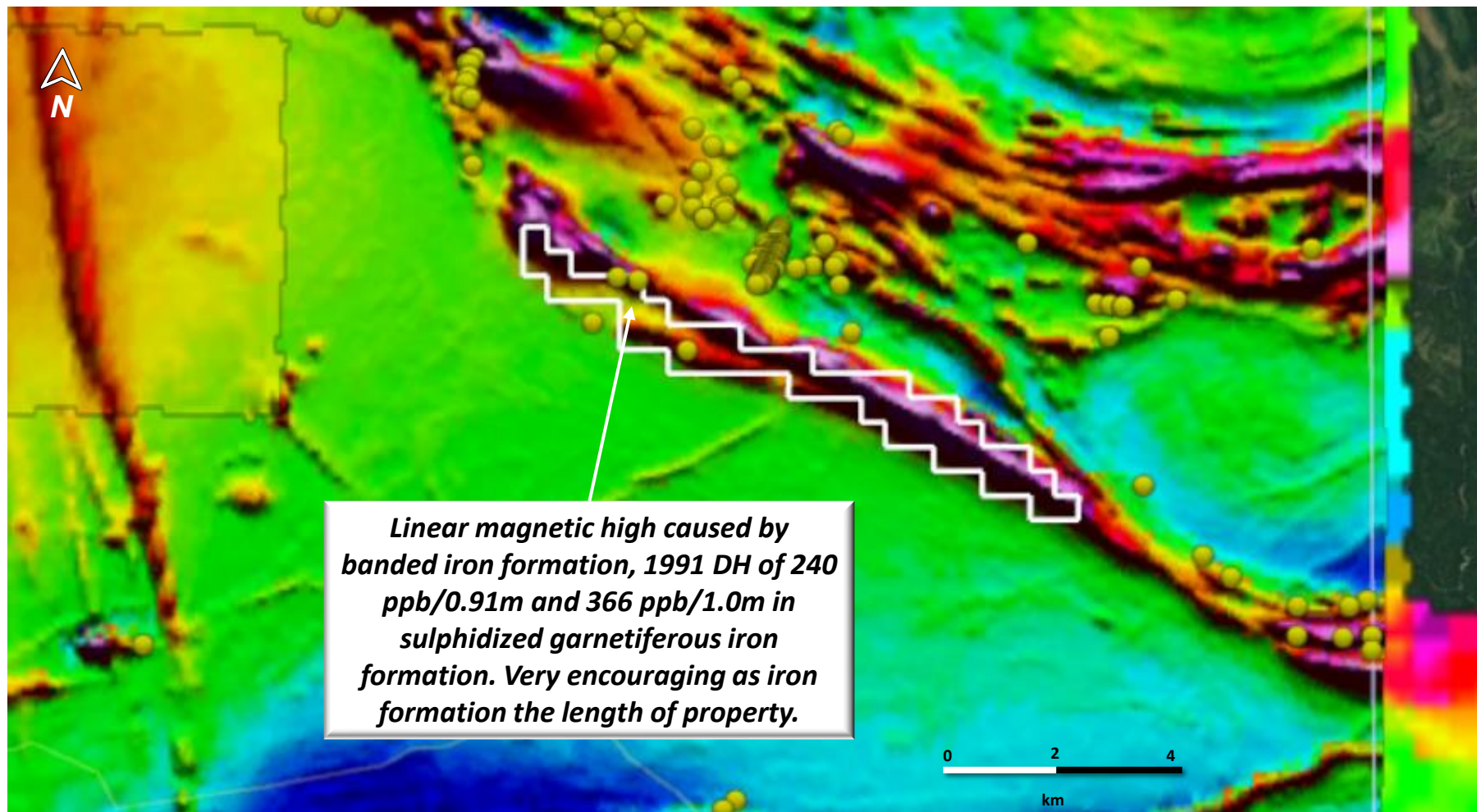
## *Diamond Drilling, 1990 Diamond Drilling, Noseworthy Property*

1990 diamond drilling by Cogema along the Spade Lake Shear Zone: 7.9 g/t Au over 4.5m, 2.75 g/t Au over 13.5m, 5.96 g/t Au over 1.5m and 0.41 g/t Au over 29.5m. No drilling on the Noseworthy Property.



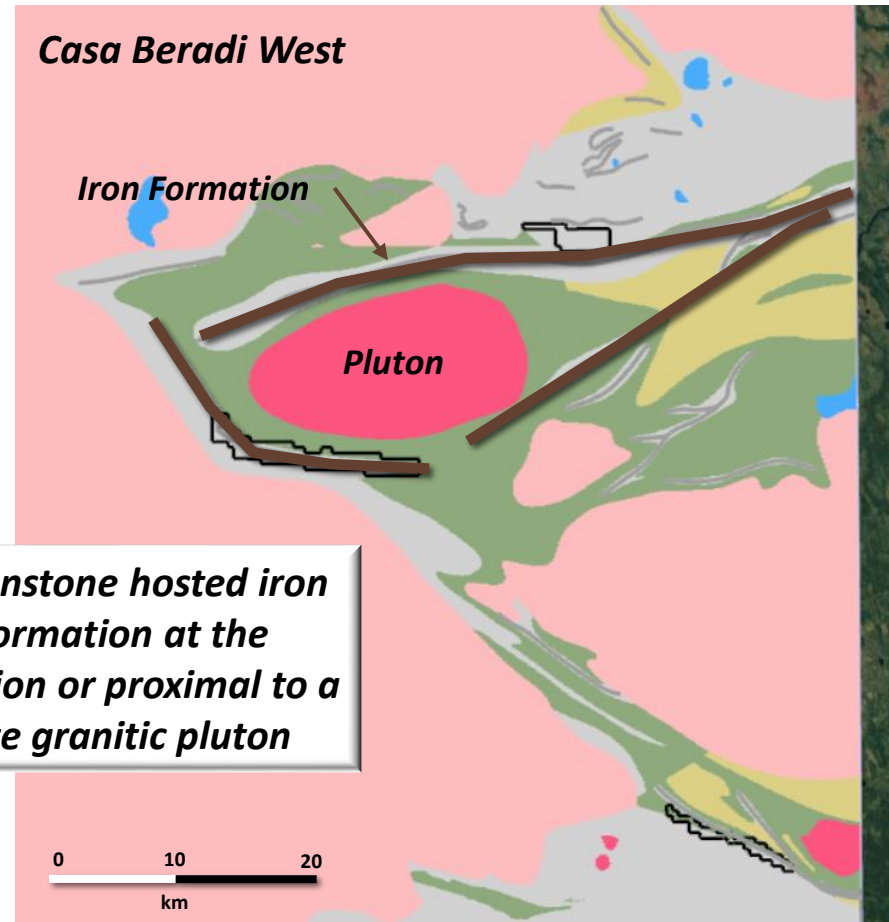
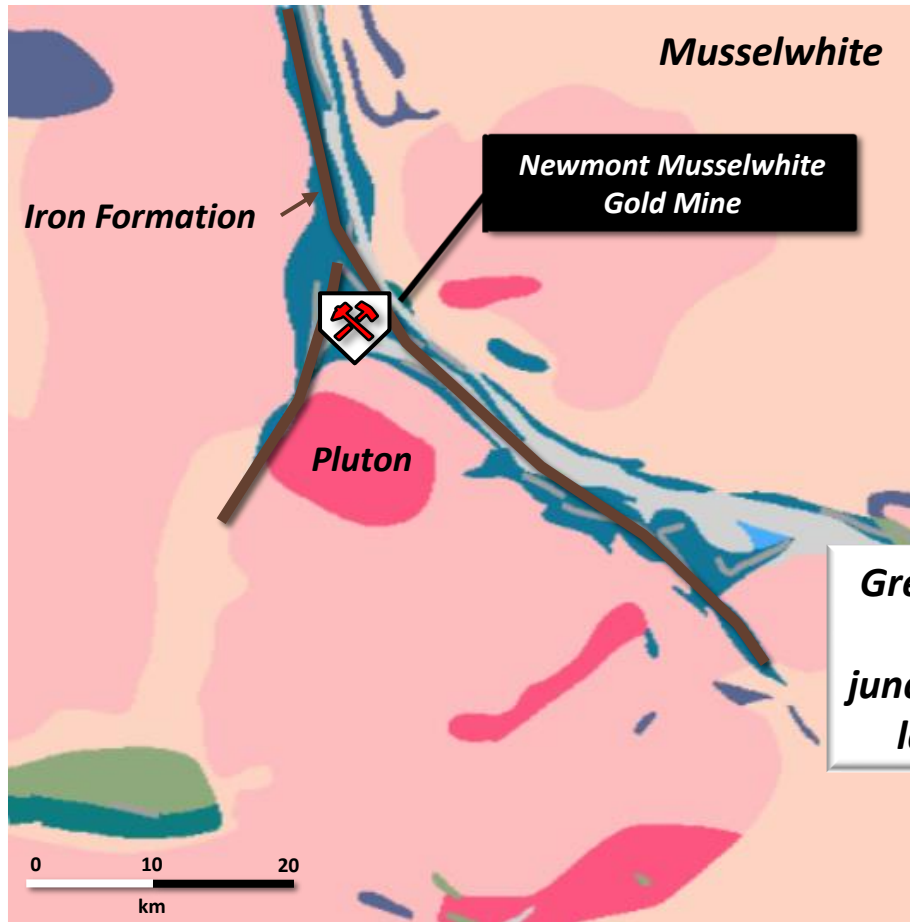


## *1990-91 Diamond Drilling Hepburn Property*



# Musselwhite Gold Mine Analogy

The Musselwhite gold mine in northwestern Ontario is a classic banded iron-formation (BIF) hosted gold deposit that has produced 4 Moz. Au and contains another 3 Moz. Au in reserves and resources. The shallow plunging shoot within the BIF produces 1 Moz. Au for every kilometre strike length of IF.





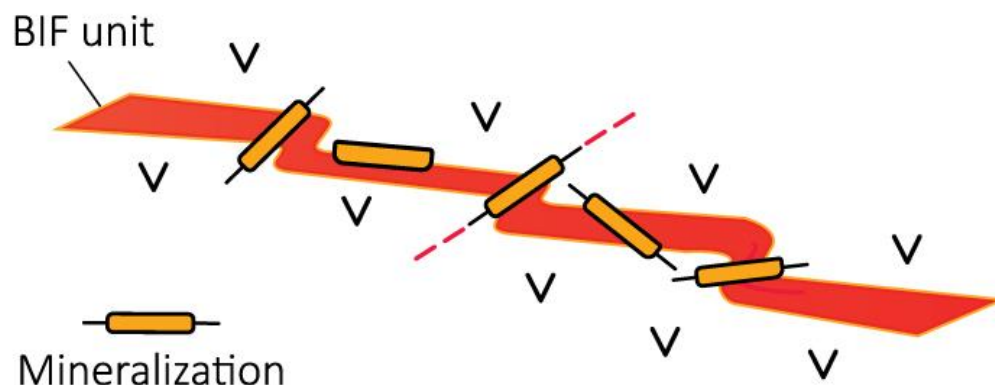
# Banded iron formation (BIF) hosted gold deposits



**BIF-hosted Gold Deposit:**  
Note fine scale pyrite replacement of magnetite and associated Au ore  
(photo from David Groves)

- BIF hosted gold deposits can be hosted in a variety of settings within and proximal to a BIF. Structure is key to prepare the brittle BIF for gold-bearing hydrothermal fluids that convert the iron to pyrite and/or pyrrhotite and deposit gold.

## Diversity of structural settings for BIF - Hosted gold mineralization



- The difference between ore and waste can be abrupt on both a micro and exploration sized scale.

## *Recommended Exploration Strategy*

---

- Compilation of all public geological, geophysical and drilling information for each Property.
- Noseworthy Property, high resolution heliborne magnetic survey followed by structural and geological interpretation.
- Newman claim group, structural and geological interpretation from the Geotech heliborne magnetic and VTEM survey (2012) incorporating drilling, mineralization and geology.
- Hepburn Property, high-resolution heliborne magnetic survey followed by structural interpretation integrating geology and mineralization.
- Ground-truthing, sampling and mapping those areas of high merit.
- Ground geophysics (IP) over most promising targets to generate drill targets.
- Diamond drilling.