



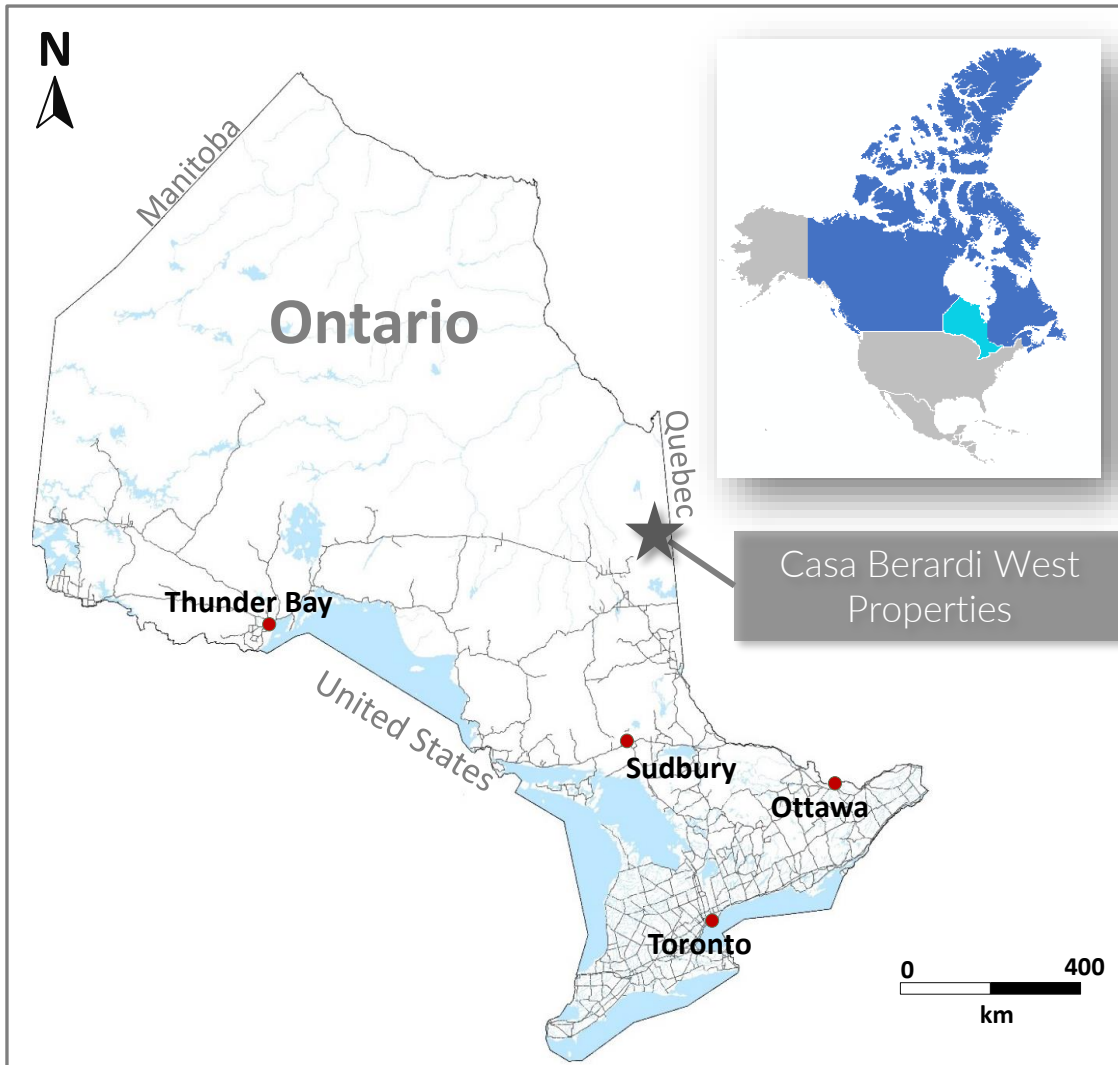
Casa Berardi West Property Overview

Cochrane, Ontario

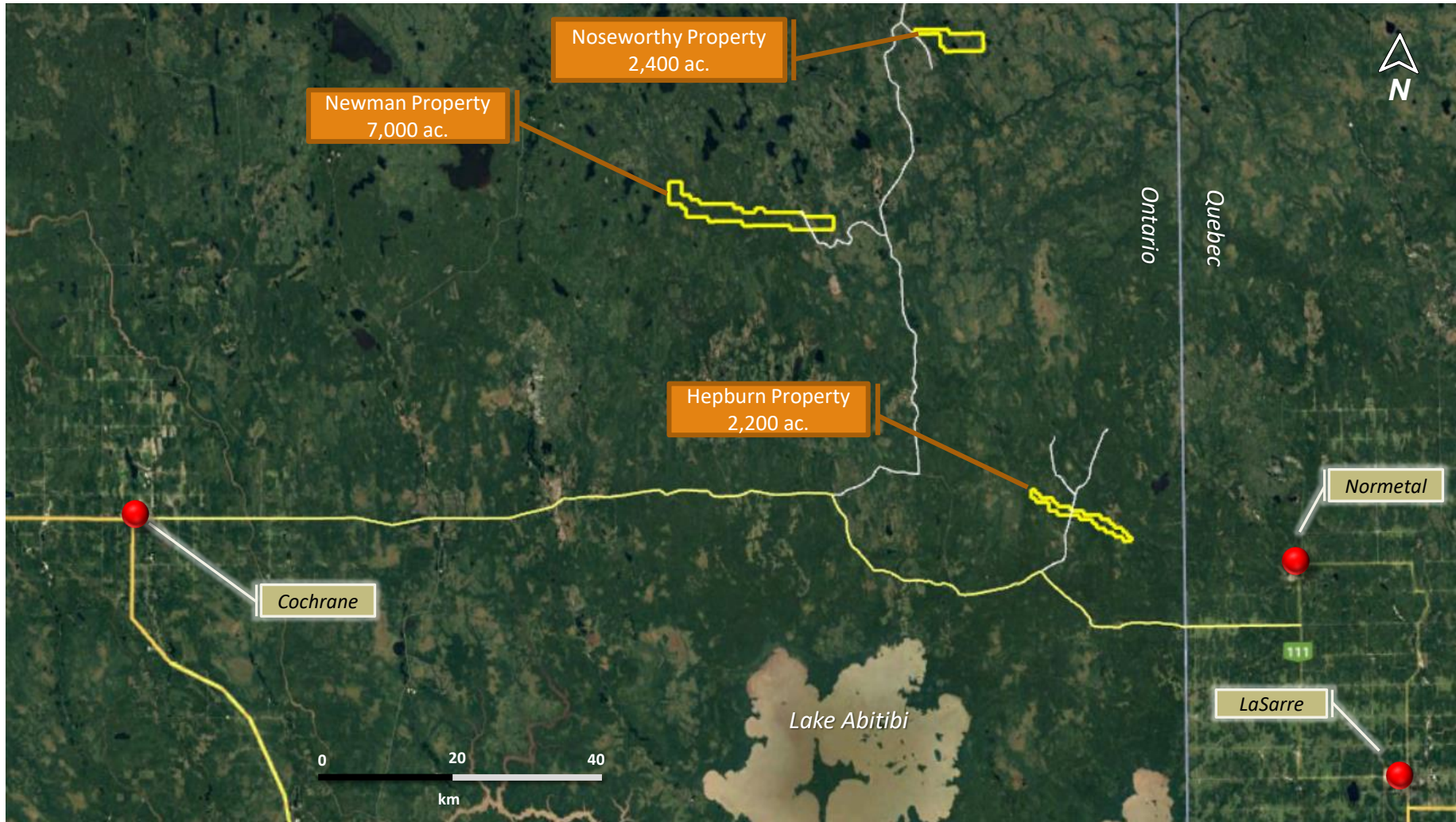
Property Summary

- The Casa Berardi West Properties consist of 3 claims groups comprising a total of 11,600 acres or 4,700 hectares.
- Strategically located northeast of Cochrane in the metal endowed central north Abitibi Subprovince.
- The properties lie along structural corridors that host the Casa Berardi gold mine, the recent AMEX Exploration gold discovery, the Normetal Cu-Zn mine and south of the Agnico Eagle Detour Mine.
- Numerous iron formations and shear zones proximal to a late granitic pluton has gold deposit analogies to the Musselwhite gold mine in northern Ontario.
- Multiple initial encouraging drill results.
- Excellent location, access and close to infrastructure.

Regional Location

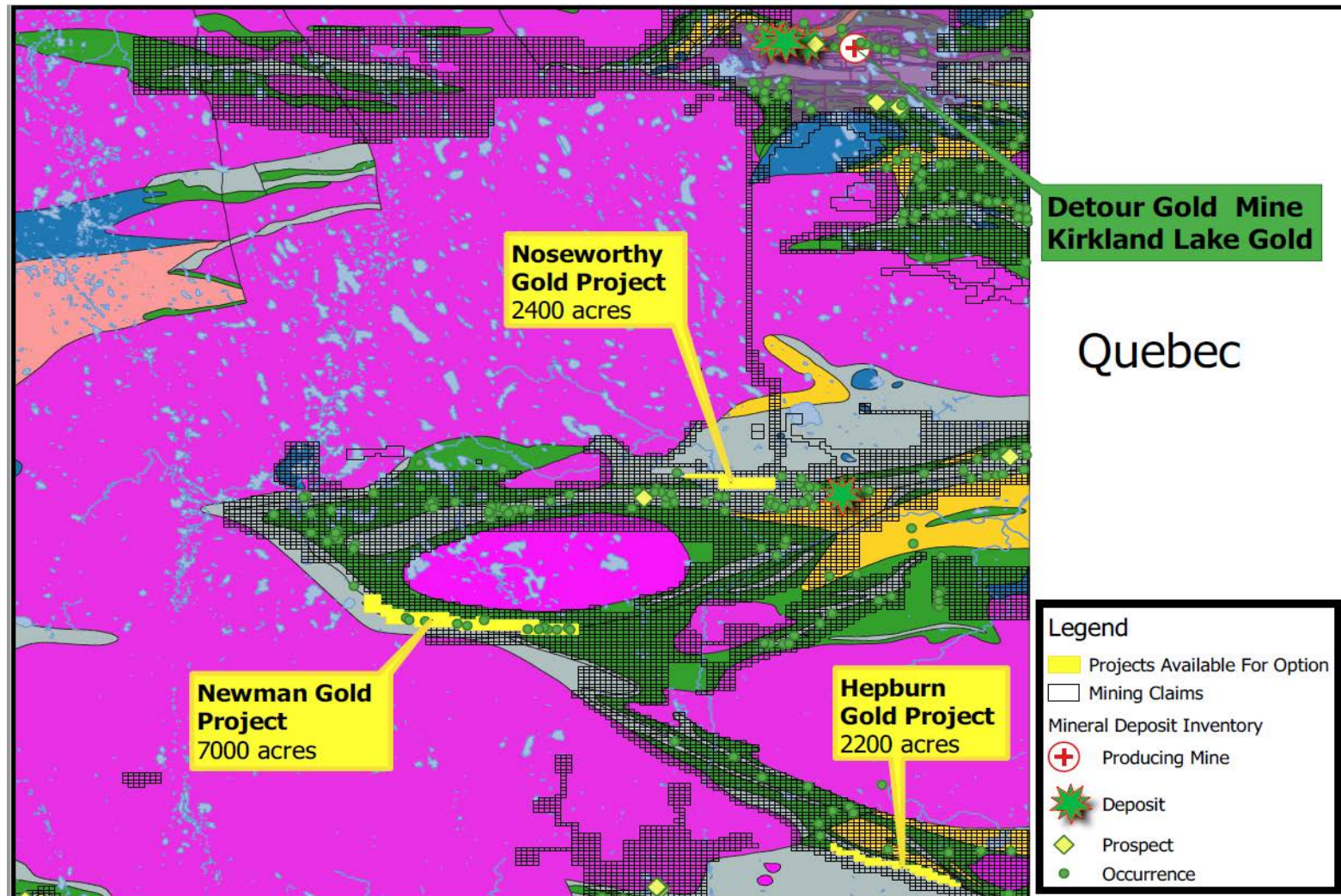


Local Location and Access

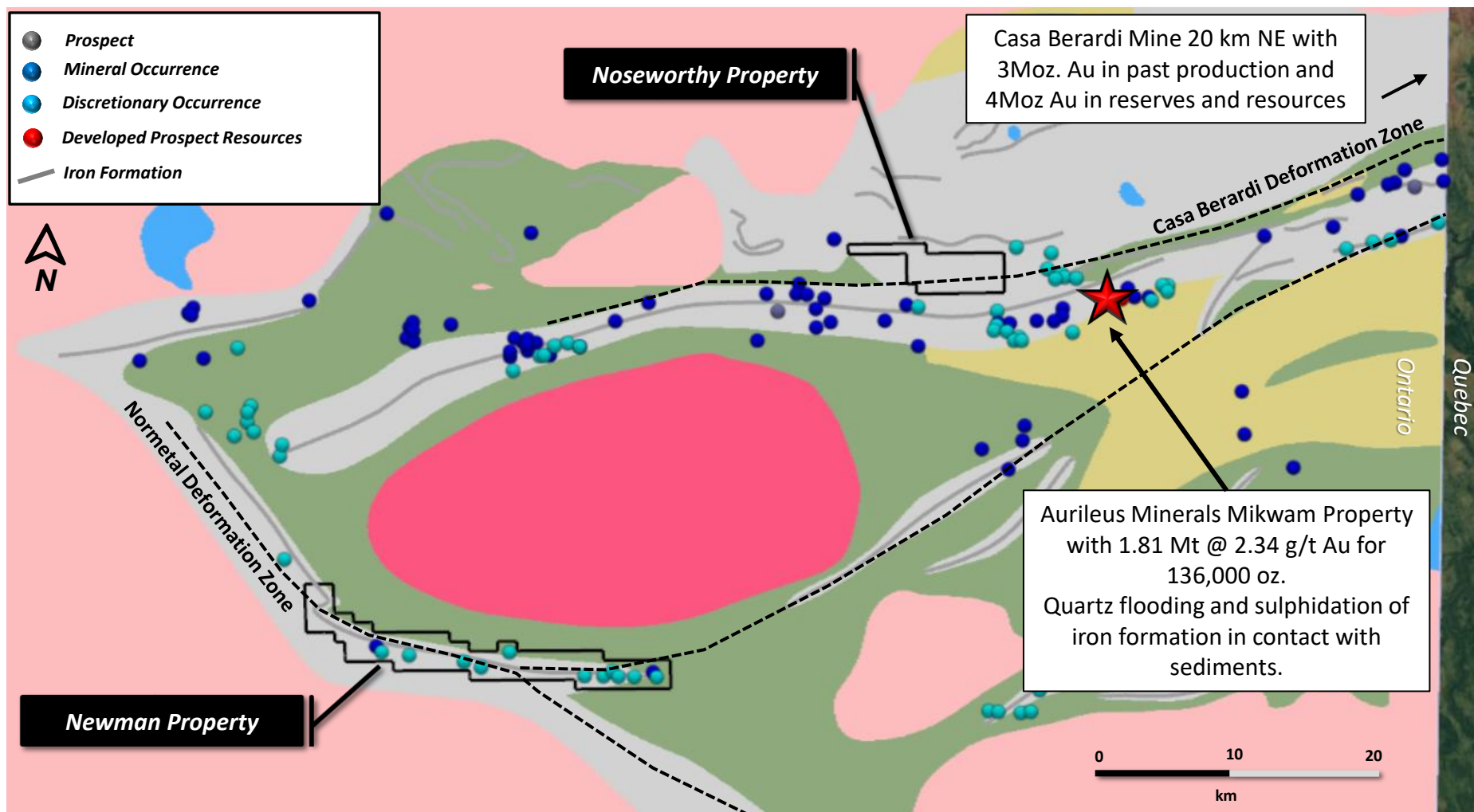


- Excellent location, access through a network of logging roads and nearby infrastructure

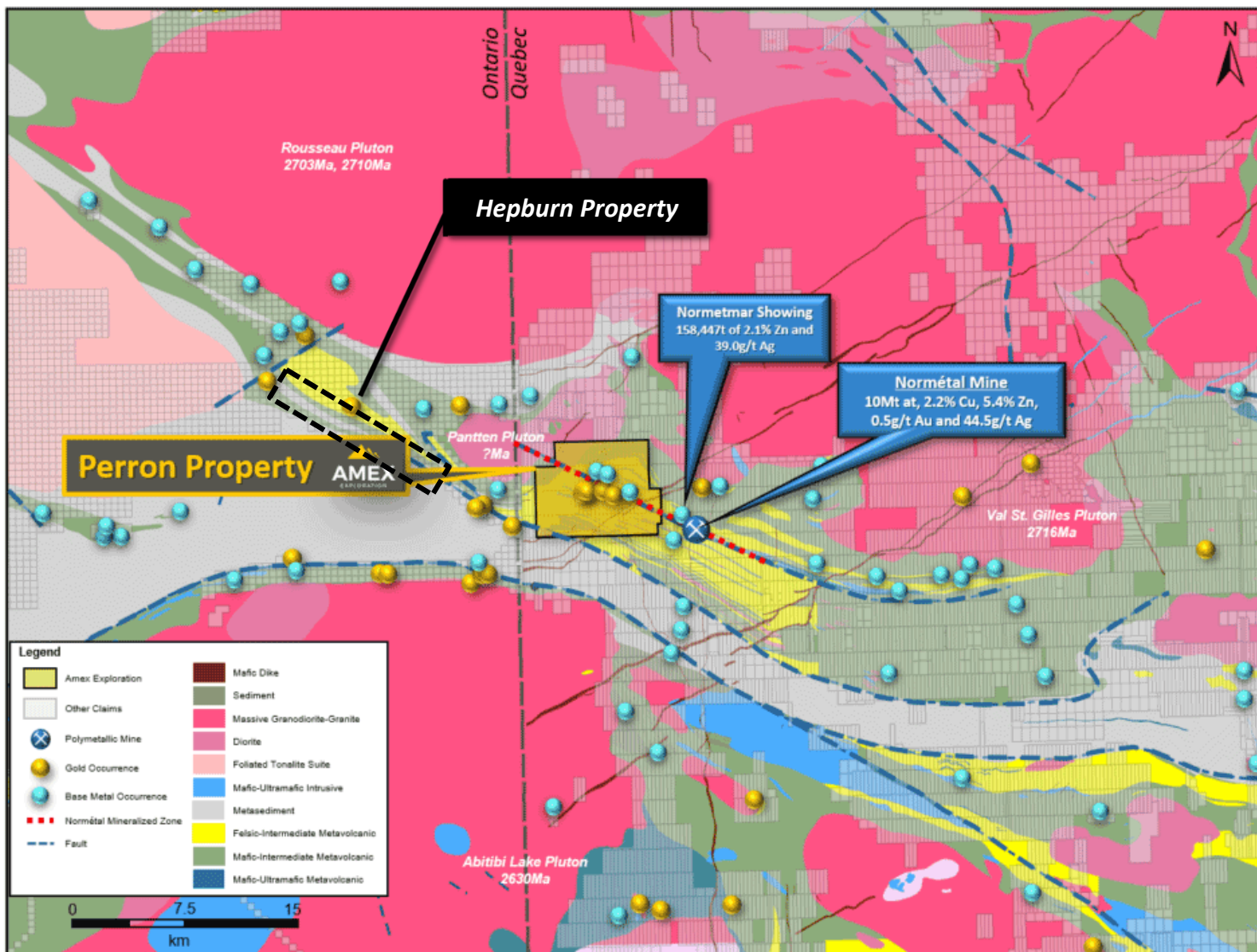
Central North Abitibi Subprovince Geology



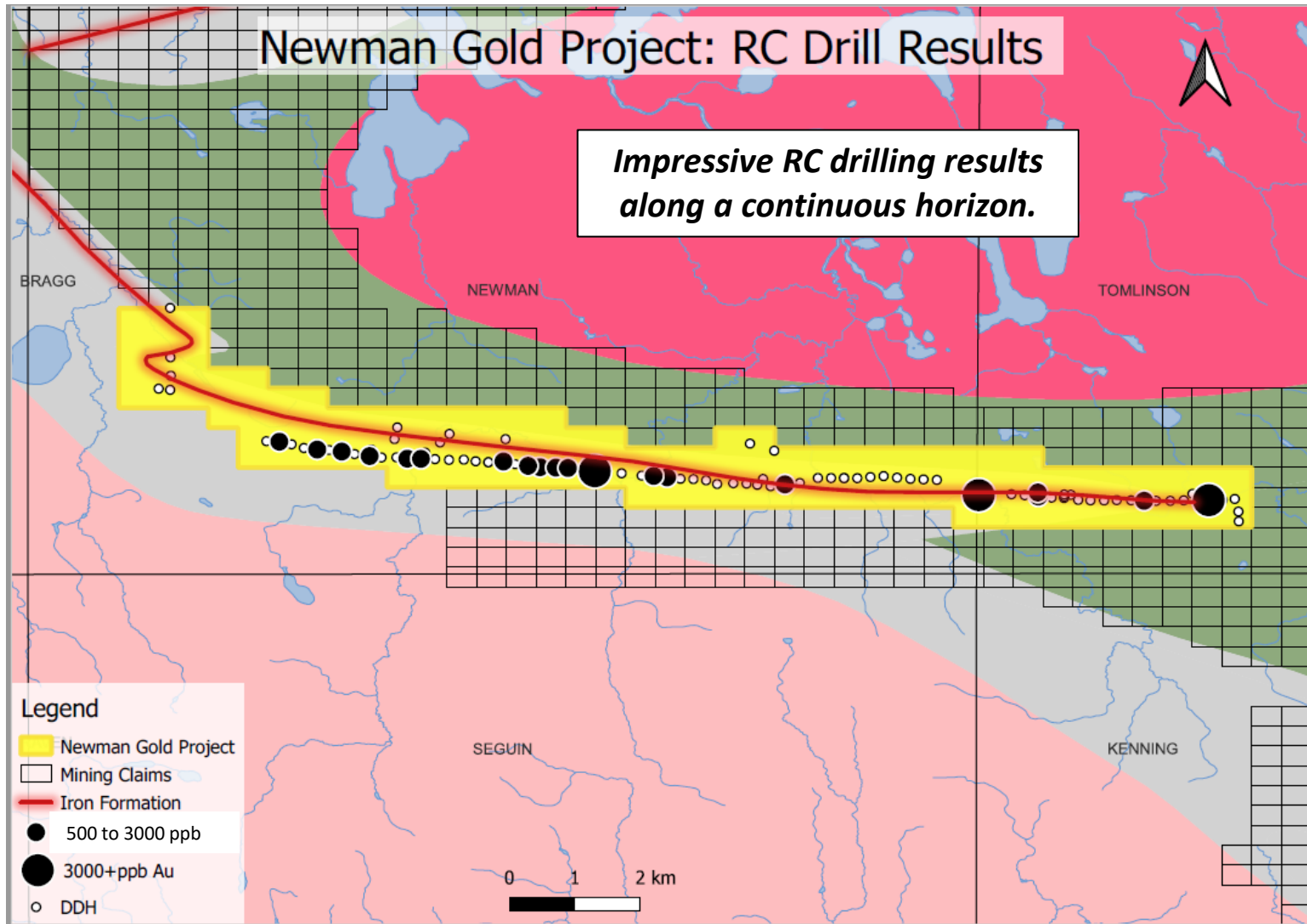
Regional Geology, Newman and Noseworthy Properties



Hepburn Property Location...within 5 km of the Perron Property

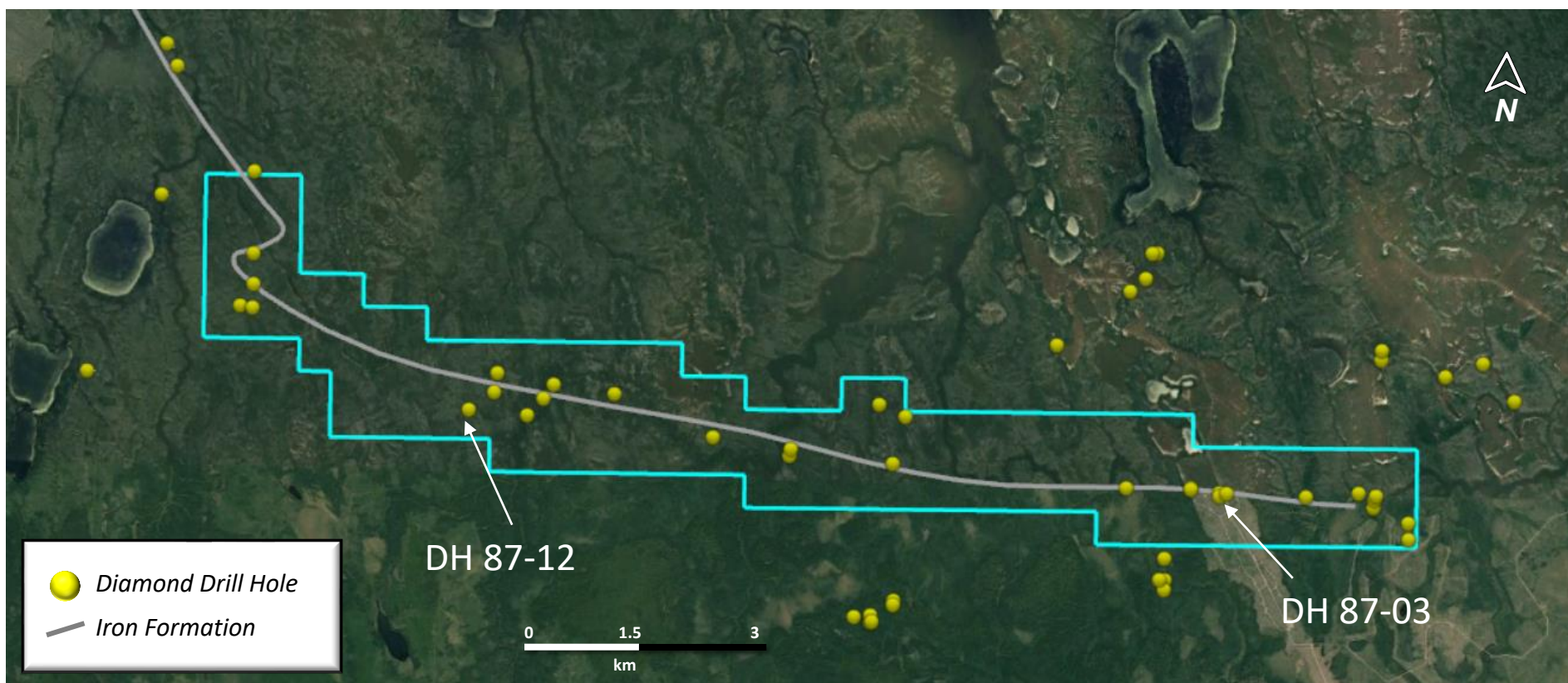


RC Drilling, 1987 Chesbar Resources, Newman Property



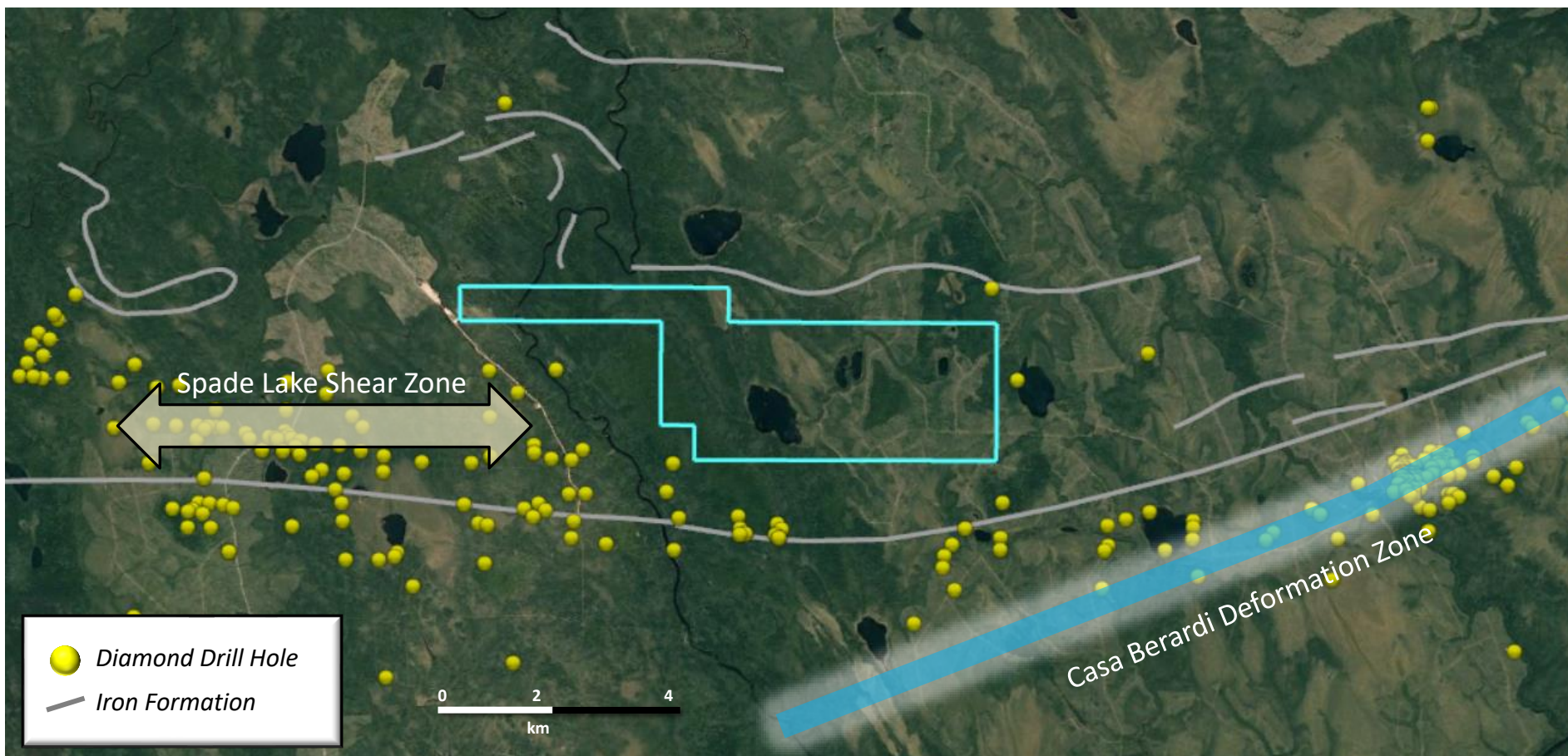
Diamond Drilling, 1987 Chesbar Resources, Newman Property

Diamond drilling by Chesbar Resources targeted the north conductor (“A”) of the RC gold results, instead of targeting the horizon that possibly contained the gold. In drill hole 87-03 a result of 1.65 g/t Au over 0.91 m was obtained in a 15m wide kaolinite-chlorite schist. This value was immediately at the bedrock surface and the first sample, but never followed up on. Hole 87-12 intersected sulphidized iron formation providing evidence that iron formations are present.

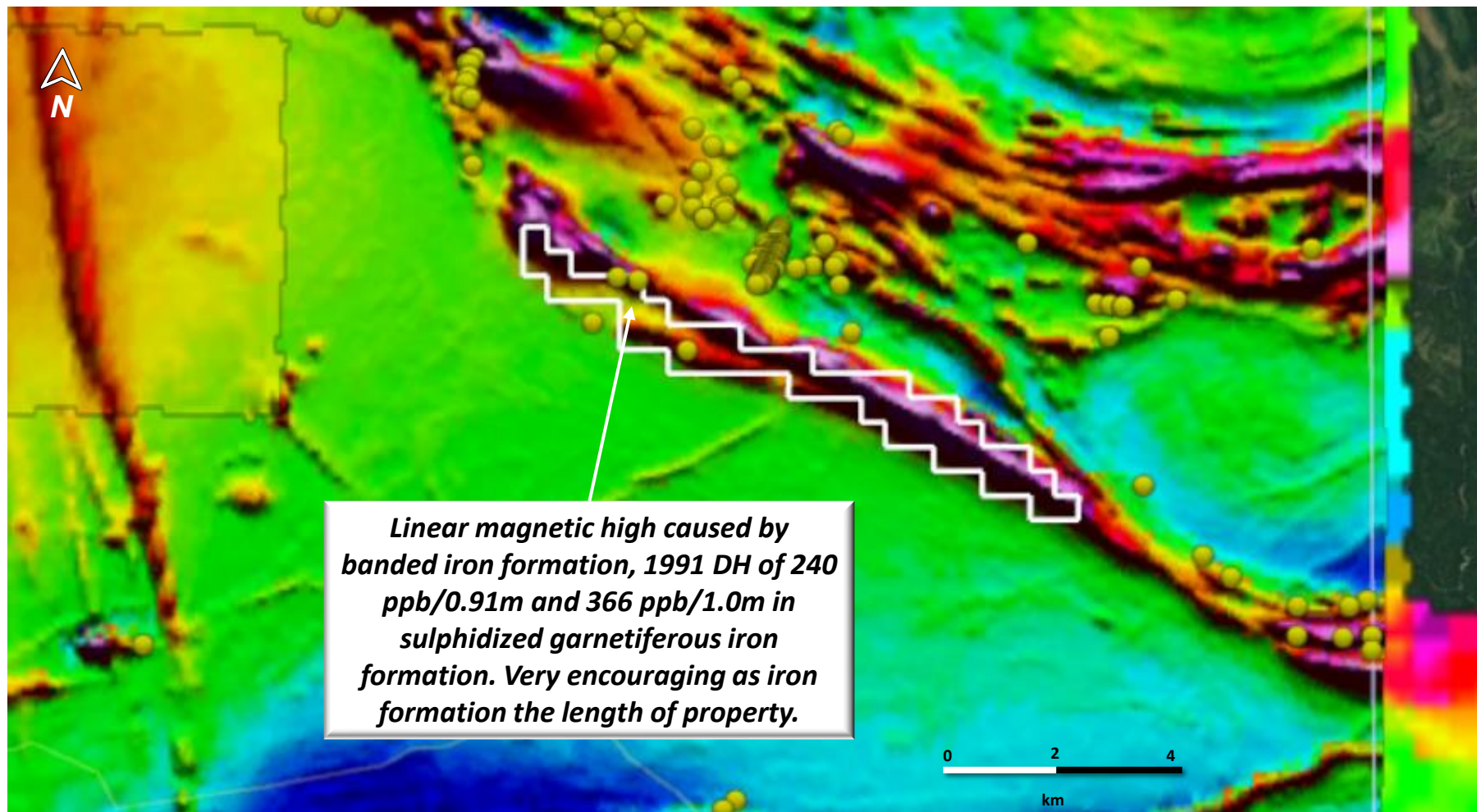


Diamond Drilling, 1990 Diamond Drilling, Noseworthy Property

1990 diamond drilling by Cogema along the Spade Lake Shear Zone: 7.9 g/t Au over 4.5m, 2.75 g/t Au over 13.5m, 5.96 g/t Au over 1.5m and 0.41 g/t Au over 29.5m. No drilling on the Noseworthy Property.

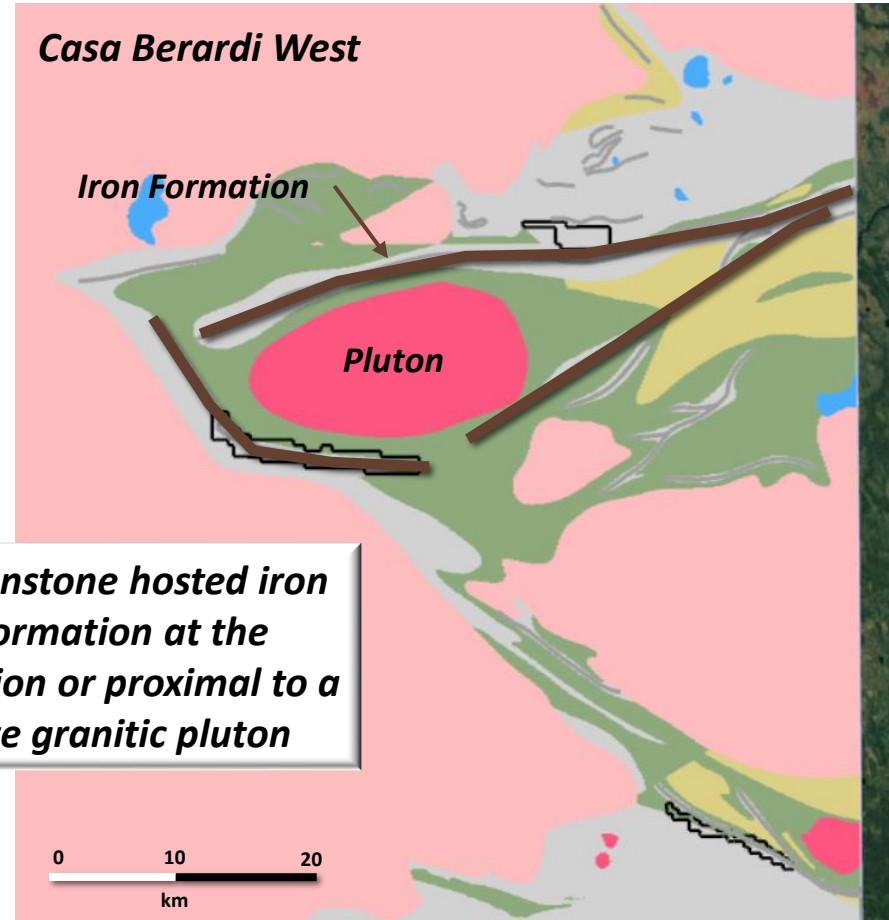
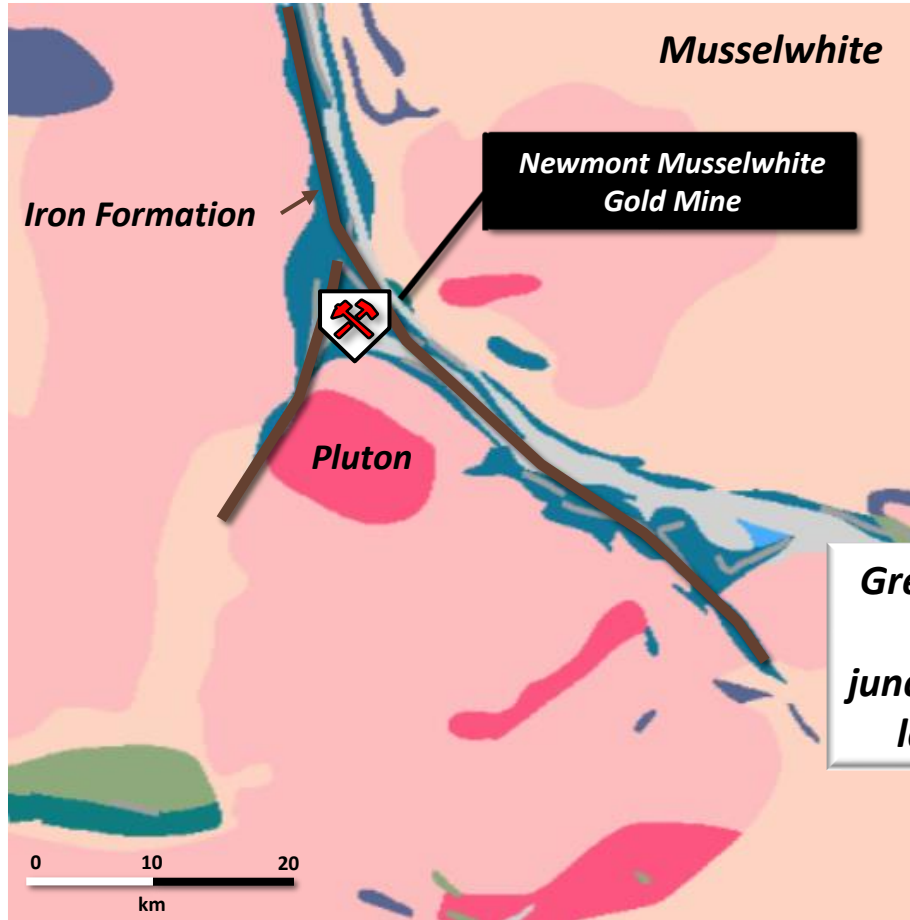


1990-91 Diamond Drilling Hepburn Property



Musselwhite Gold Mine Analogy

The Musselwhite gold mine in northwestern Ontario is a classic banded iron-formation (BIF) hosted gold deposit that has produced 4 Moz. Au and contains another 3 Moz. Au in reserves and resources. The shallow plunging shoot within the BIF produces 1 Moz. Au for every kilometre strike length of IF.



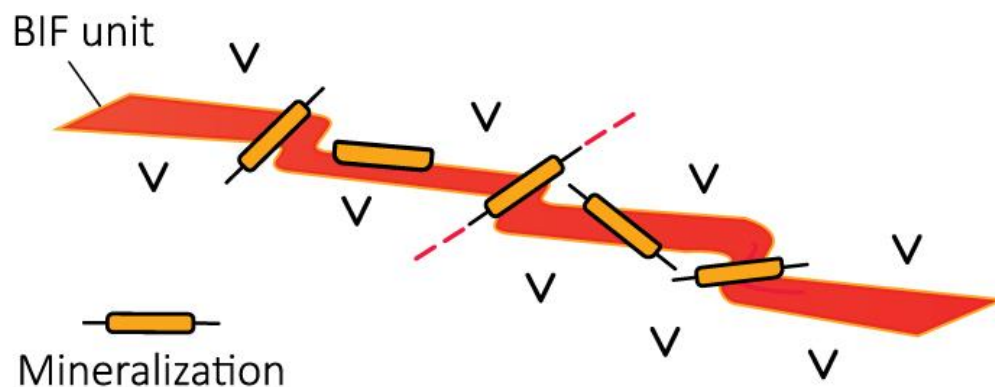
Banded iron formation (BIF) hosted gold deposits



BIF-hosted Gold Deposit:
Note fine scale pyrite replacement of magnetite and associated Au ore
(photo from David Groves)

- BIF hosted gold deposits can be hosted in a variety of settings within and proximal to a BIF. Structure is key to prepare the brittle BIF for gold-bearing hydrothermal fluids that convert the iron to pyrite and/or pyrrhotite and deposit gold.

Diversity of structural settings for BIF - Hosted gold mineralization



- The difference between ore and waste can be abrupt on both a micro and exploration sized scale.

Recommended Exploration Strategy

- Compilation of all public geological, geophysical and drilling information for each Property.
- Noseworthy Property, high resolution heliborne magnetic survey followed by structural and geological interpretation.
- Newman claim group, structural and geological interpretation from the Geotech heliborne magnetic and VTEM survey (2012) incorporating drilling, mineralization and geology.
- Hepburn Property, high-resolution heliborne magnetic survey followed by structural interpretation integrating geology and mineralization.
- Ground-truthing, sampling and mapping those areas of high merit.
- Ground geophysics (IP) over most promising targets to generate drill targets.
- Diamond drilling.