

The Ana Sofia Project is a near-surface sedimentary deposit of agricultural gypsum. Fertilizer distributors in Argentina and bordering countries market high grade agri-gypsum products to farmers to increase crop yields.

HIGHLIGHTS

- ✓ 500 Ha exploration rights
- ✓ 2 mining permits received
- ✓ Environmental permit received
- ✓ Export permit received
- ✓ Sales contracts
- ✓ Agri-Gypsum resource of 1.47million tonnes @ 94%

Ana Sofia Deposit Highlights:

- Agri- gypsum resource of 1.47mil tonnes of material averaging 94.1% gypsum (NI 43-101 compliant inferred resource)
- Mineralization remains open in multiple directions
- At least 2 flat lying sedimentary layers within 10m of surface
- Resource situated 1km from a paved highway and power lines
- Phase 1 Plant fully permitted and operational

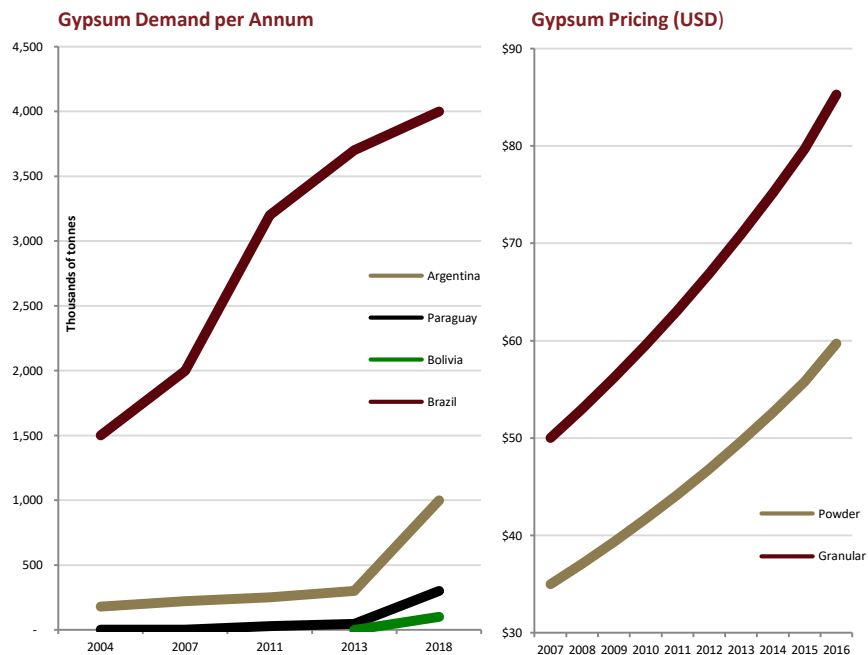
Agri-gypsum Market Size:

125 million hectares of agricultural production in serviceable area. Applications of approximately 1 tonne per hectare/year can increase crop yields up to 40%.

Growth rates in food production have consistently decreased and Gypsum can help reduce this declining trend.

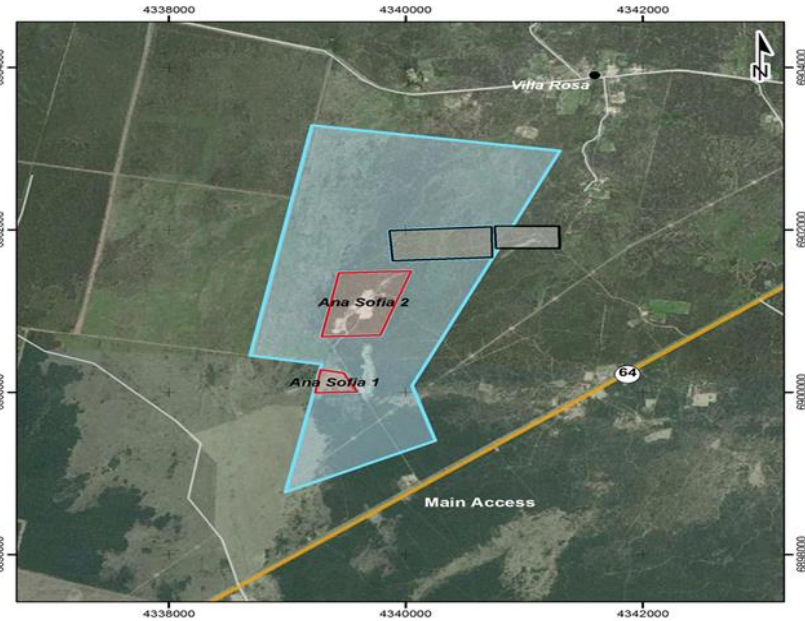
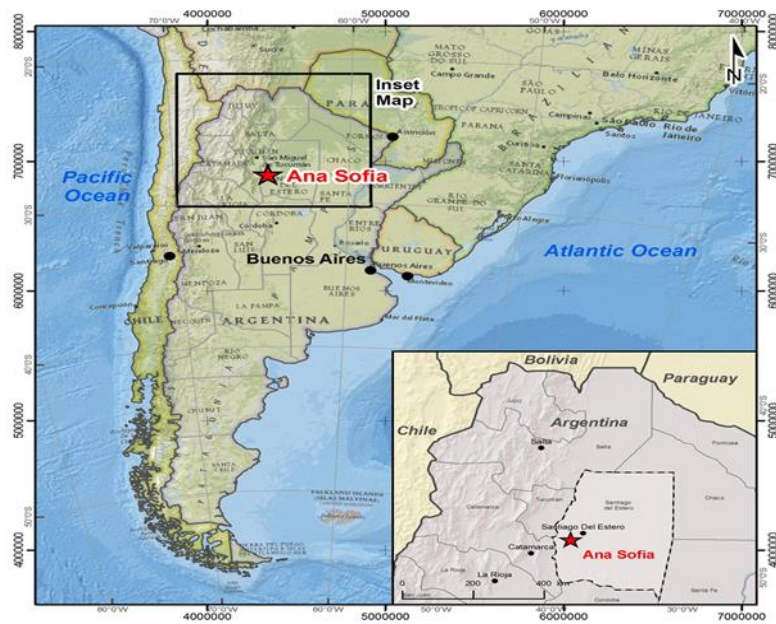
AGRICULTURAL LAND REVITALIZATION

The Company formed the Optamagro Argentina (“Optamagro”) division, to focus on revitalizing, underutilized and distressed agricultural land. To achieve this, Optamagro is integrating Centurion’s current agri-gypsum fertilizer operations with cutting edge satellite imagery and on the ground soil testing. Optamagro will procure and oversee the application of agri-gypsum, and other organic minerals, fertilizers and seeds. Approximately 10 million hectares of agricultural land in Argentina has been adversely affected by adverse weather patterns in the last 2 years. Several land acquisition and profit-sharing opportunities have been sourced and are presently being negotiated.



ARGENTINA • MINING • AGRICULTURE

ANA SOFIA AGRI-GYPSUM PROJECT LOCATION



AGRI-GYPSUM PROCESSING PLANT



Share structure at January 1, 2020

Common Shares outstanding	33,639,473
Options	416,667
Warrants	22,580,909
Fully diluted shares outstanding	56,637,049

Contact

David Tafel
Centurion Minerals Ltd.
President & CEO
davidt@cdnstock.com
(604) 484-2161

Jeremy Wright
Centurion Minerals Ltd.
CFO & Director
jwright@seatrendstrategy.com
(604) 837-7990

Suite 520 – 470 Granville Street, Vancouver, BC, V6C 1V5

* Technical content has been reviewed and approved by Andrew J. Turner, B.Sc., P.Geol. of APEX Geoscience Ltd., who is the Company's Geological Consultant and is a Qualified Person as defined by National Instrument 43-101, Standards of Disclosure for Mineral Projects.

* The Ana Sofia mineral resource estimate is reported in accordance with the Canadian Securities Administrators National Instrument 43-101 and has been estimated using the CIM "Estimation of Mineral Resources and Mineral Reserves Best Practice Guidelines" dated November 23rd, 2003 and CIM "Definition Standards for Mineral Resources and Mineral Reserves" dated May 10th, 2014. Due to the relatively wide spacing of the historical quarries and the 2016 test pits, which varies between 40 m and 300 m, the Ana Sofia 2 resource described herein is categorized entirely as an inferred mineral resource. Inferred Mineral Resources are not Mineral Reserves. Mineral resources which are not mineral reserves do not have demonstrated economic viability. There has been insufficient exploration to define the inferred resources as an indicated or measured mineral resource, however, it is reasonably expected that the majority of the Inferred Mineral Resources could be upgraded to Indicated Mineral Resources with continued exploration. There is no guarantee that any part of the mineral resources will be converted into a mineral reserve in the future. The estimate of mineral resources may be materially affected by geology, environment, permitting, legal, title, taxation, socio-political, marketing or other relevant issues. The Ana Sofia project has not been the subject of a feasibility study and as such there is no certainty that a potential mine will be realized or that the processing facility will be able to produce a commercially marketable product. There is a significant risk that any production from the project will not be profitable with these risks elevated by the absence of a compliant NI 43-101 feasibility study. A mine production decision that is not based on a feasibility study demonstrating economic and technical viability does not provide adequate disclosure of the increased uncertainty and specific risks of failure associated with such a production decision. The Company has undertaken market research and studies to try to mitigate these risks. The work carried out to date is of a preliminary nature to assist in the determination as to whether the mineral product is suitable for sale and if there are markets for the mineral product. General risks inherent in the Project include the reliance on available data and assumptions and judgments used in the interpretation of such data, the speculative and uncertain nature of exploration and development costs, capital requirements and the ability to obtain financing, volatility of global and local economic climates, share price volatility, estimated price volatility, changes in equity markets, exchange rate fluctuations and other risks involved in the mineral exploration and development industry. There can be no assurance that a forward-looking statement or information referenced herein will prove to be accurate, as actual results and future events could differ materially from those anticipated in such statements or information. Accordingly, readers should not place undue reliance on forward-looking statements or information. We undertake no obligation to reissue or update any forward-looking statements or information except as required by law.